

The background features a large, light blue silhouette of a world map. A central cutout in the map reveals a photograph of a grassland landscape at sunset. The sky is filled with soft, golden light and scattered clouds, while the foreground shows a field of tall grasses and small shrubs. In the distance, a range of low mountains is visible under the hazy sky.

# CENTRAL GRASSLANDS ROADMAP

## A Collaborative Conservation Strategy

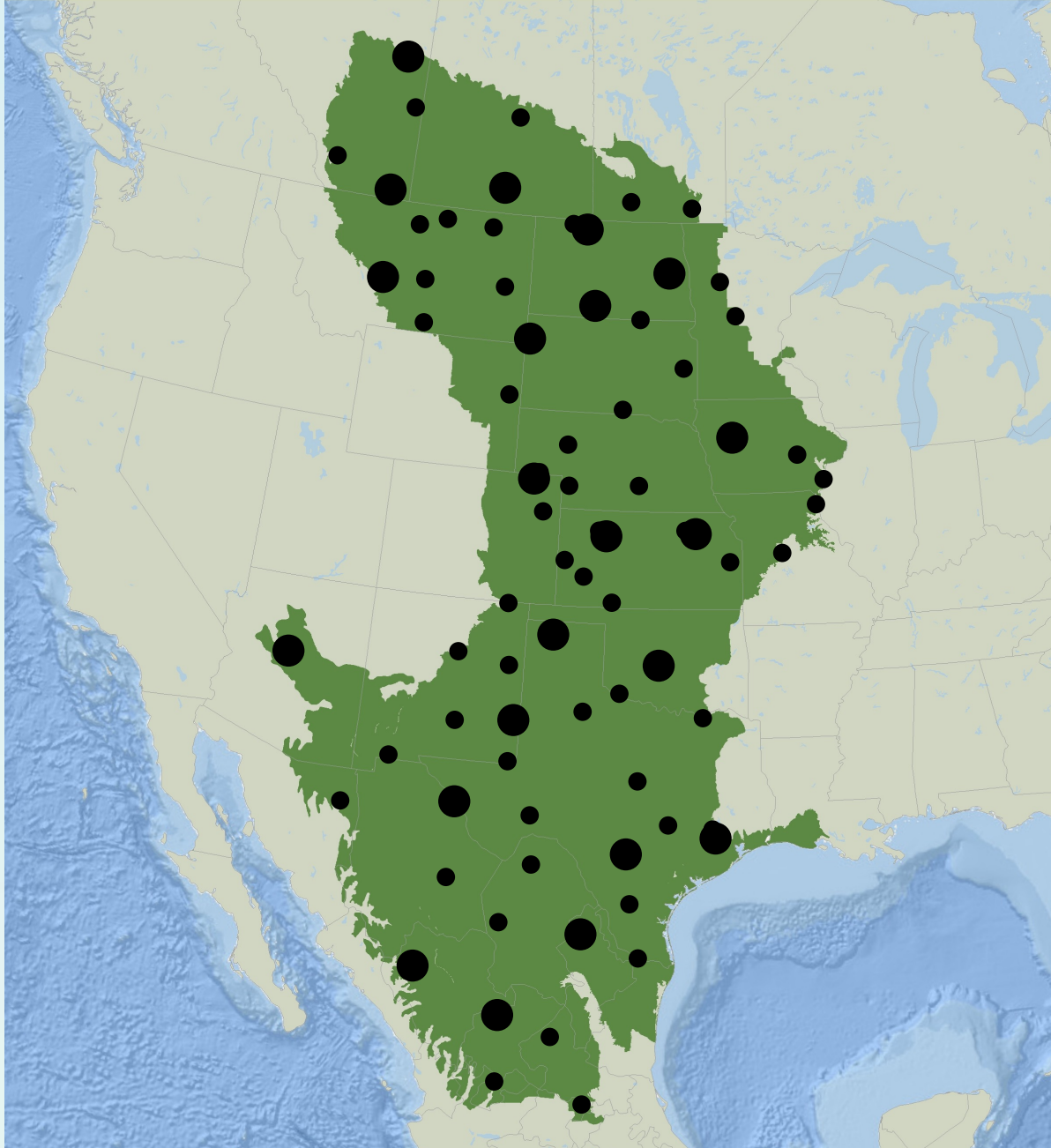
**Framing for the Overarching  
Biological Objectives and Tools  
for Birds Workshop**

# THE GREAT PLAINS GRASSLANDS ROADMAP



**It's important to keep in mind that the Central Grasslands Roadmap is a collaborative effort identifying principles and priorities, but not taking the place of conservation delivery on-the-ground.**

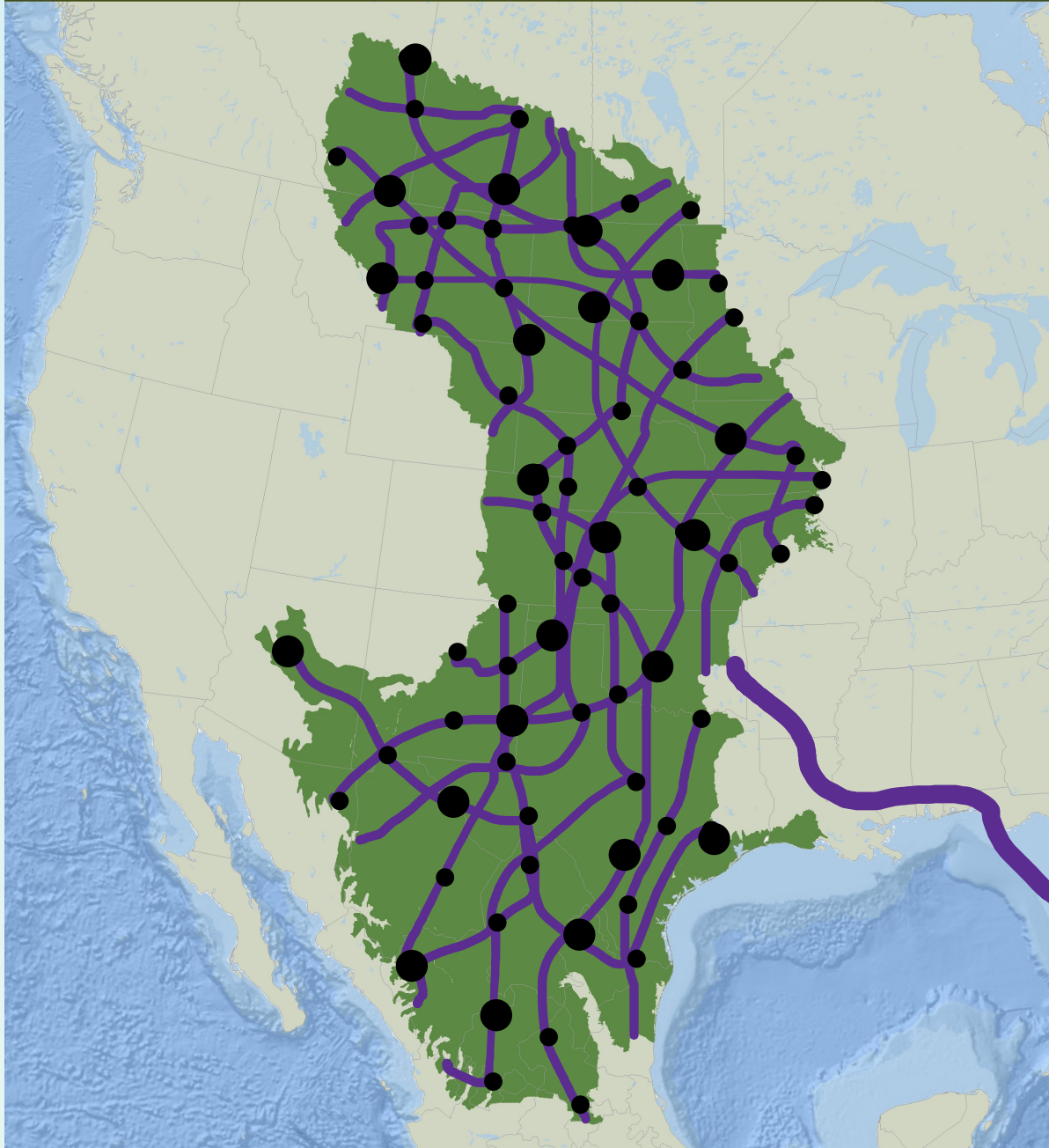
# THE GREAT PLAINS GRASSLANDS ROADMAP



With that in mind, the ● are representative of conservation delivery, programs, and initiatives happening at the local level.



# THE GREAT PLAINS GRASSLANDS ROADMAP



**The Roadmap seeks to be the connective tissue or neuro-network between all of these different efforts, motivating communication & collaboration, identifying gaps, and increasing resource.**

## Outcome 1: Collaboration

**Strengthened scientific collaboration among Grasslands and Great Plains scientists to ensure alignment and focus on biological objectives and tools that can maximize the success of the Roadmap and subsequent conservation delivery for grassland birds.**

## Outcome 2: Alignment

**Collaborate as a community to affirm an overarching goal for grassland birds in the Roadmap:** *“In the next 20 years, 20+ **representative** species will be kept stable if common, stabilized if declining, and/or reversing the trend and recovering the populations if in steep decline, understood through a dashboard of existing tools that can be used over time.”*

- This will enable us to communicate an effective and collective strategy
- This will affirm 20+ species that can demonstrate progress

## Scorecard Goals

**Today's work is focused on** *the bird section of the fauna goal within a suite of Roadmap goals:*

1. *People*
2. *Flora and habitat conditions (acreage, plant biodiversity, and soil)*
3. *Fauna (suite of birds, suite of pollinators, suite of mammals)*
4. *Water*
5. *Climate Resiliency*
6. *Regenerative Agriculture*
7. *Industry Impacts (e.g. siting)*



## CENTRAL GRASSLANDS ROADMAP

*In the next 20 years, 20+ **representative** species will be kept stable if common, stabilized if declining, and/or reversing the trend and recovering the populations if in steep decline, understood through a dashboard of existing tools that can be used over time.*

### **Species List established to Catalyze Collaboration**

- Aligning with other major efforts (R2R, BCC, JV, SGCN)
- Creating urgency through at-risk species
- Keeping common species common
- Engaging Geographic Representation
- Providing Habitat/Eco-tonal Diversity
- Diverse enough for a broad understanding of how efforts are adding up without getting myered in detail





## Iterative

- The urgency to stop species declines and avoid threatened or endangered listing, or worst of all, extinction, **outweighs and supersedes** the need to define the perfect model just to get started: **we can and will learn more, but we know enough to continue, hypothesize, and try things out.**
- The Roadmap develops a biome vision and biome goals, but interventions are designed and happen at the regional and local levels such as (to name just a couple) planting practices, rangeland practice, and locally focused social science to help know how those interventions will be implemented.

## Scale

- The Roadmap develops a **biome** vision and **biome** goals.
- Interventions are designed and happen at the **regional and local levels** such as (to name just a couple) planting practices, rangeland practice, and locally focused social science to help know how those interventions will be implemented.

## HOW TO CONTRIBUTE

- **Be willing** to sacrifice some personal perspectives to reach alignment, as we will be stronger and more successful together if we make a collective effort.
- **Listen:** Ask yourself, “how can what others are sharing inform or influence my contributions?”