

The JV8 Central Grasslands Conservation Initiative



JVs as partnership organizations



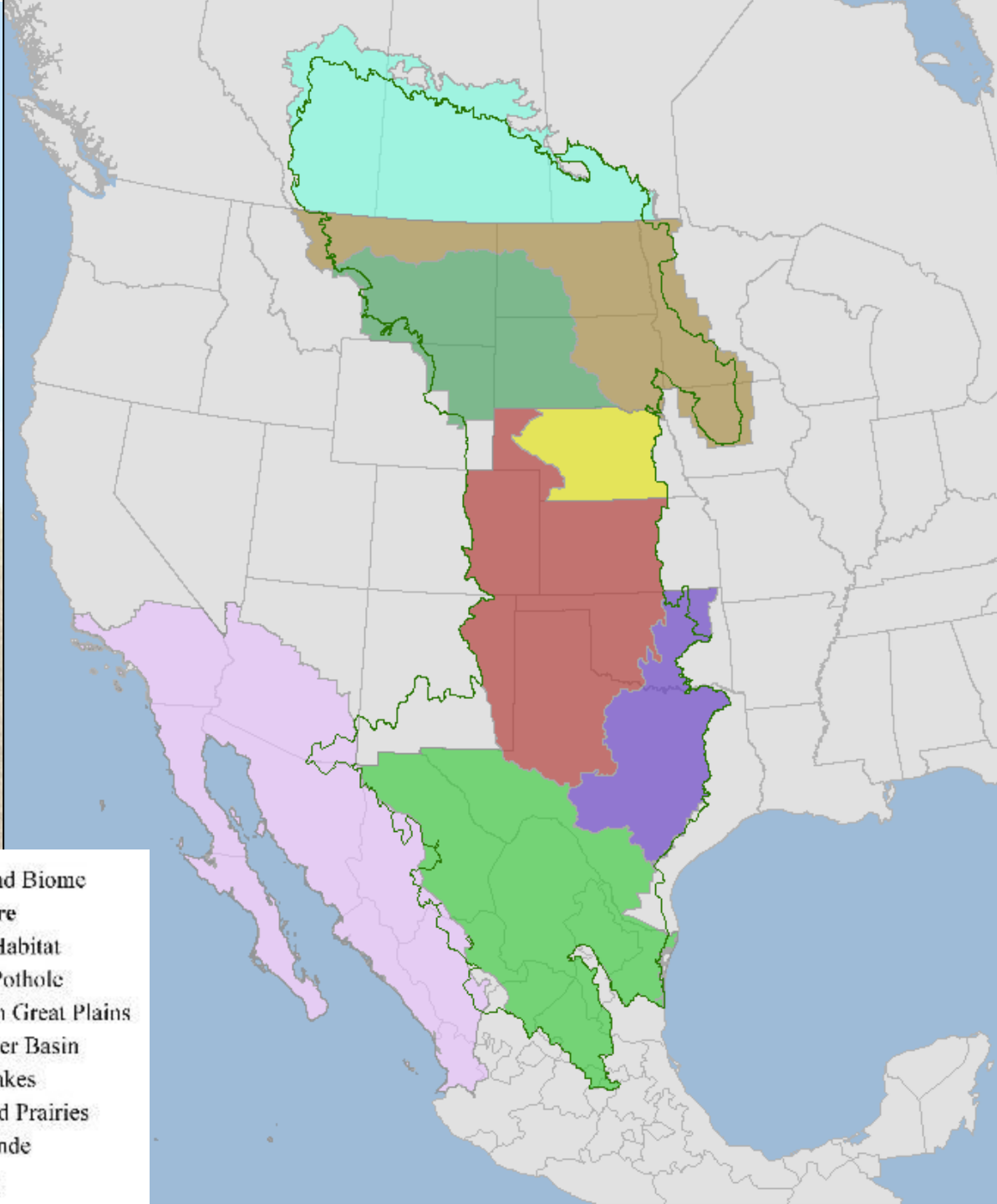
JVs can:

- Provide Science and Communications capacity
- Build Field Capacity – put boots on the ground
- Facilitate Public Private partnerships
- Leverage match funding



JV8 Conservation Director
Graeme Patterson
Graeme.Patterson@JV8.org

- Grassland Biome
- Joint Venture**
- Prairie Habitat
- Prairie Pothole
- Northern Great Plains
- Rainwater Basin
- Playa Lakes
- Oaks and Prairies
- Rio Grande
- Sonoran



Northern Great Plains JV

Catherine Wightman
cwightman@ducks.org



Oaks and Prairies JV

Robert Perez
rperez@abcbirds.org



Prairie Habitat JV

Deanna Dixon
deanna.dixon@canada.ca



Prairie Pothole JV

Sean Fields
sean_fields@fws.gov



Playa Lakes JV

Mike Carter
mike.carter@pljv.org



Rainwater Basin JV

Andy Bishop
andy_bishop@fws.gov



Rio Grande JV

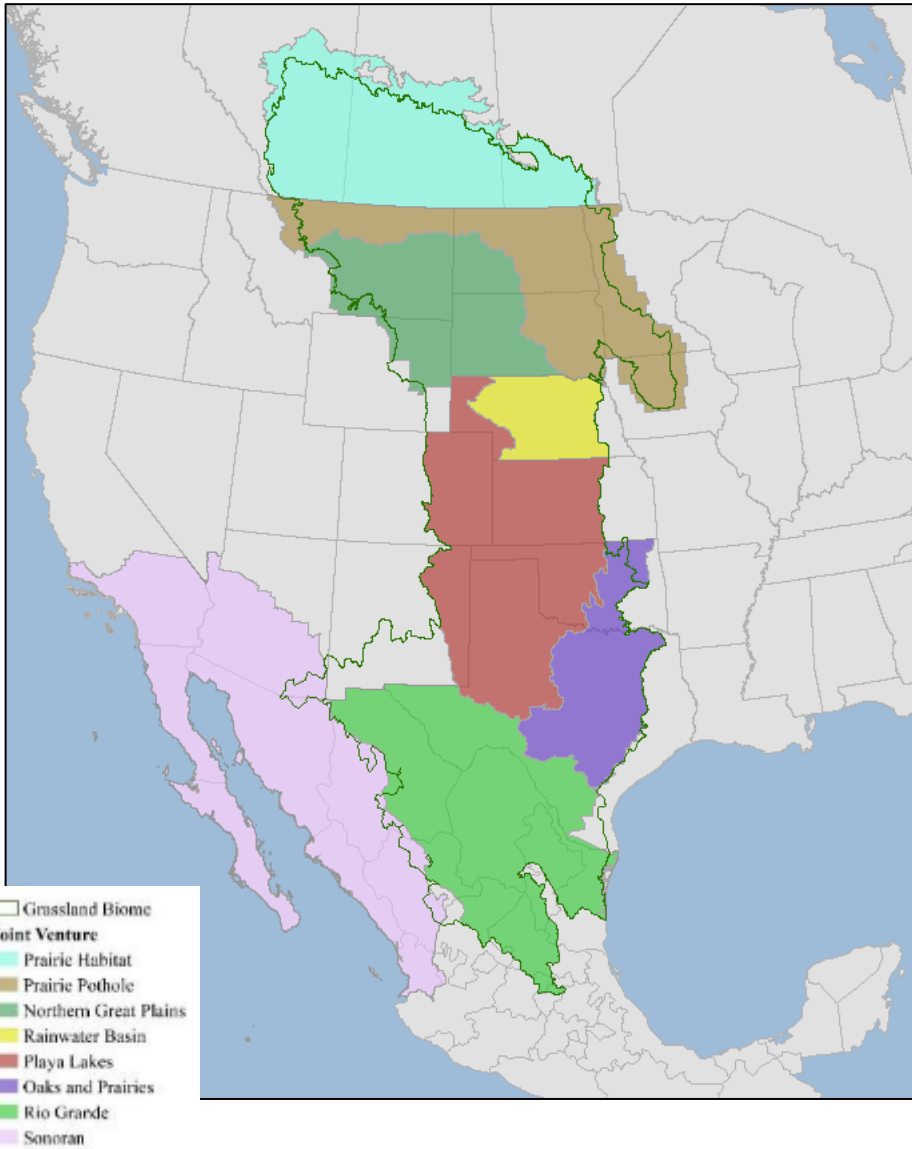
Aimee Roberson
aroberson@abcbirds.org



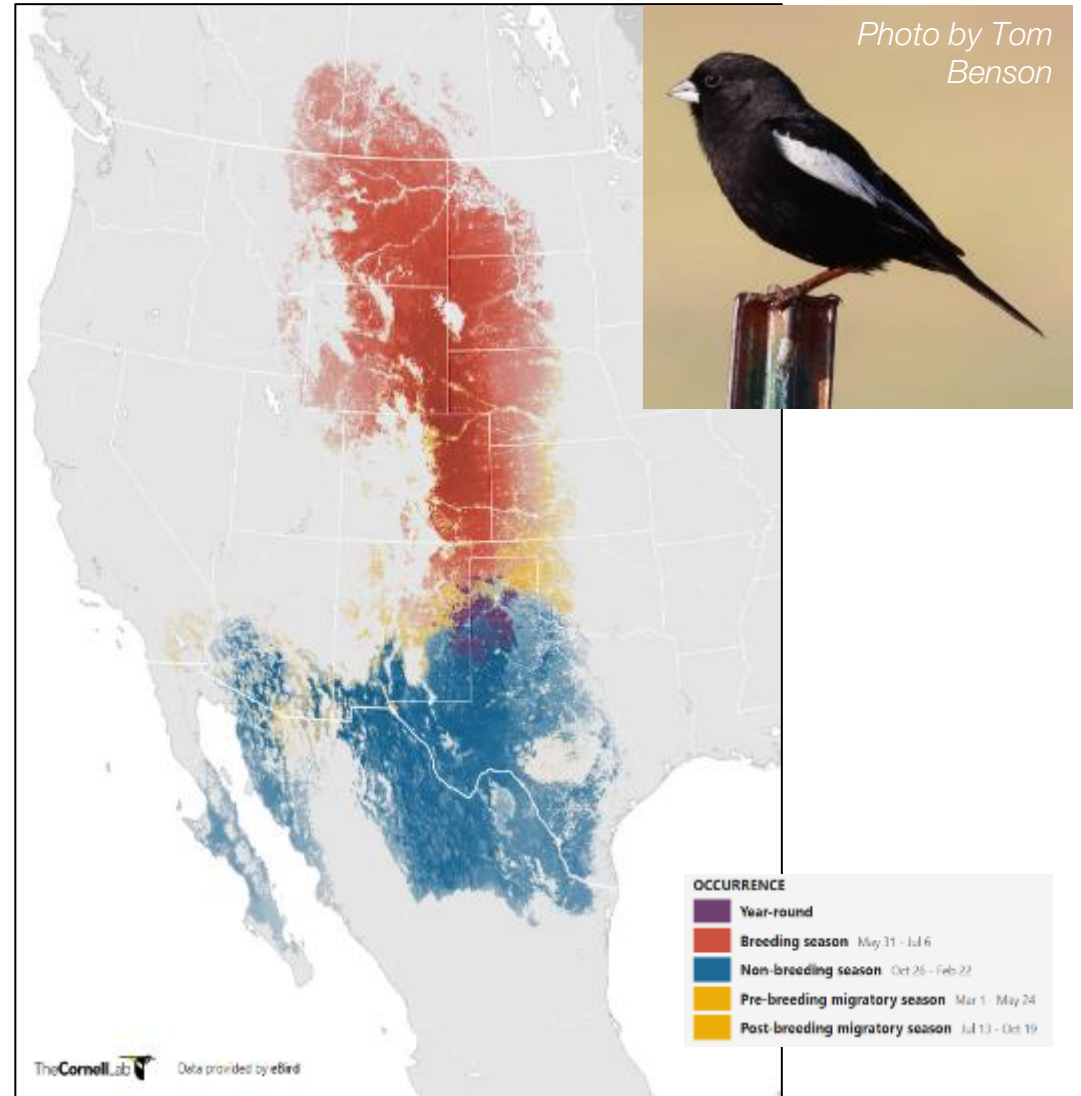
Sonoran JV

Jennie Duberstein
jennie_duberstein@fws.gov

JV8 Geography



Lark Bunting Annual Cycle



JV8 Central Grasslands Conservation Initiative



JV8 Vision

The Central Grasslands from Canada to Mexico support stable, thriving, and diverse communities of birds, other wildlife, and people into the future.

JV8 Mission

The JV8 Central Grasslands Conservation Initiative engages and expands Migratory Bird Joint Venture partnerships across North America for the stewardship of native grassland ecosystems.



JV8 Central Grasslands Conservation Initiative

- ▶ **Phase I:** Grassland Assessment (Completed December 2019)
- ▶ **Phase II:** Strategic Planning for grassland protection and restoration targets across the JV Network
 - ▶ Hire Conservation Director: Graeme Patterson (October 2020)
 - ▶ Write Strategy (completed June 2021)
 - ▶ Activated committees – marketing, metrics, fund-raising, policy support
- ▶ **Phase III:** Implementation of conservation actions through existing and expanded JV partner programs (on-going)



Phase II - JV8 Strategy



Long-billed Curlew | Photo: Dan Casey

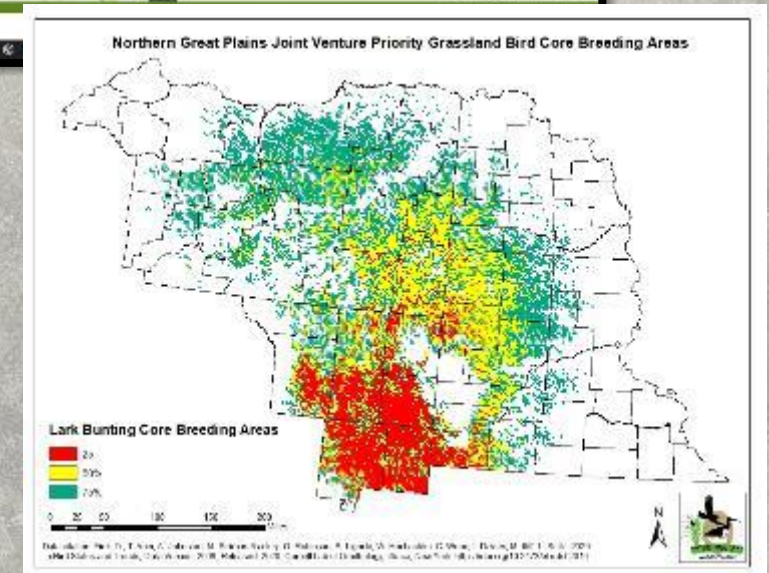
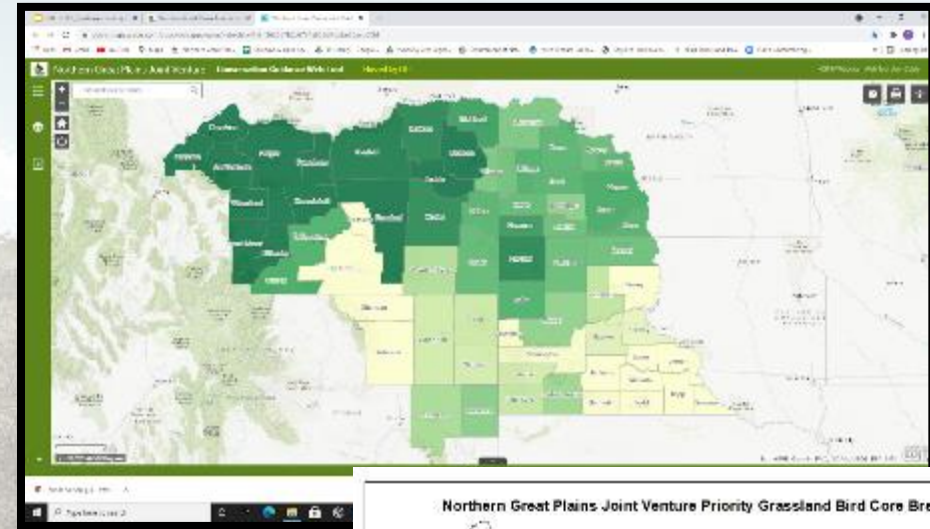
- Accelerate successful conservation actions
- Marketing and fundraising
- Identify and support policy changes that advance grassland conservation
- Promote applied research
- Innovation and new initiatives

NGPJV Conservation Guidance



Conservation Guidance Web Tool

- County-level metrics to inform planning
 - CRP, crops, land use and Human demographics
 - Protect, restore, enhance targets
- Grassland bird models
 - Ranked at county scale
 - Core Area maps for more precision



Conservation Roadshows

NGPJV Conservation Action



Northern Grasslands Restoration Incentive Program (N-GRIP)

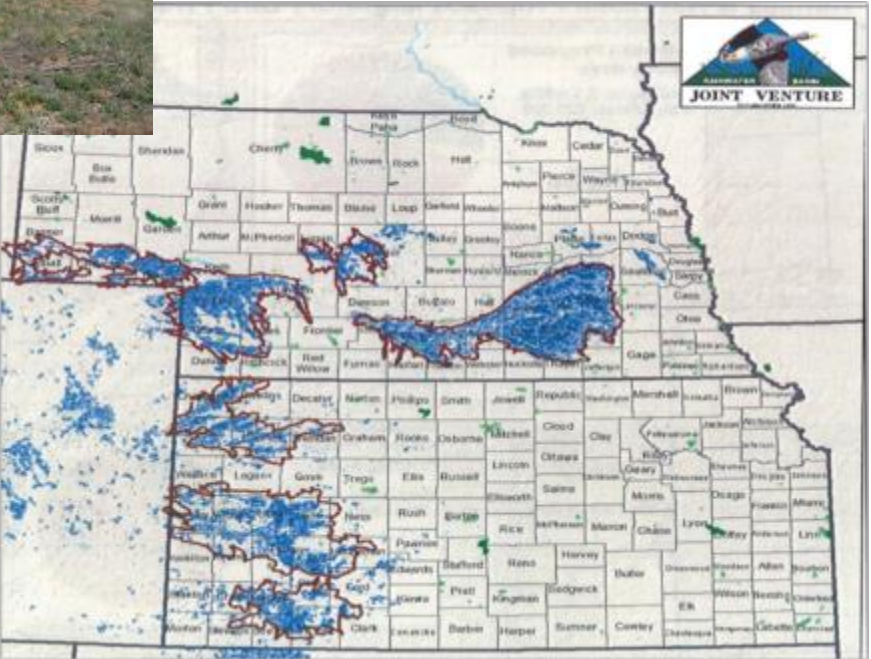
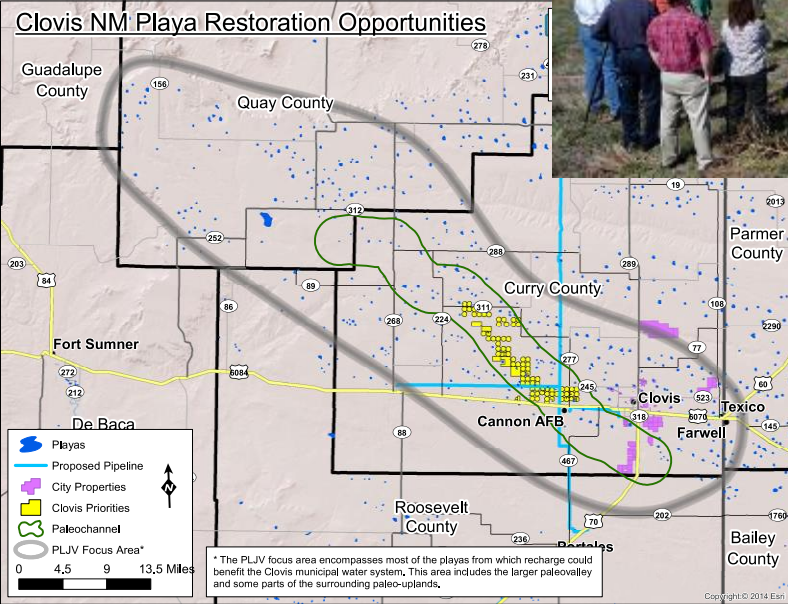
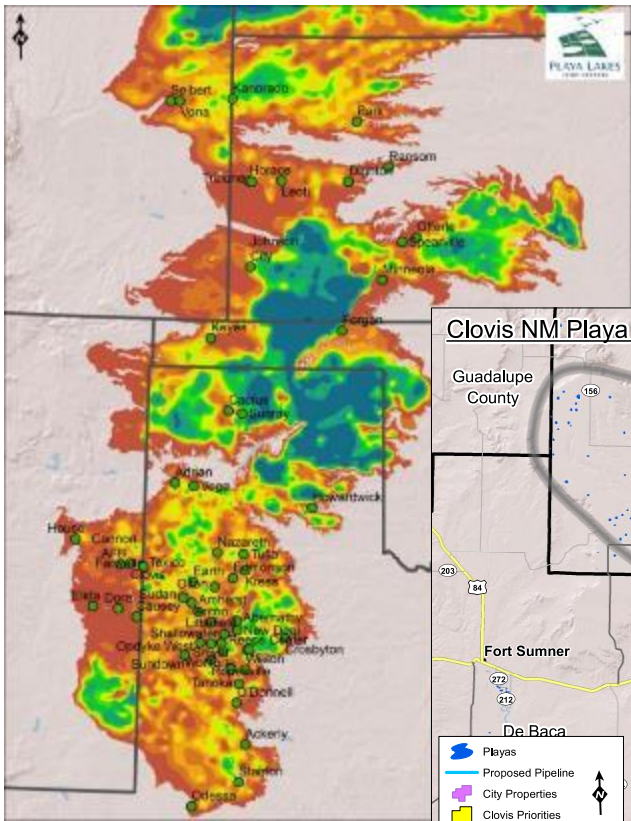
- Target N-GRIP based on state and community-led producer group priorities
- State-based Local Leadership Teams
 - Revise project proposal/review process
 - Build Ranking System
 - Establish a **strong** feedback loop between leaders and project managers

Conservation Delivery Network

- Use existing networks to deliver projects
- Farm Bill Biologists (NRCS and partners) are instrumental
- Nimble and flexible, partnership driven



Photo credit: Cheryl Mandich



Playa Lakes Joint Venture Playas and Ogallala



Working Together – NGPJV, PPJV, NRCS

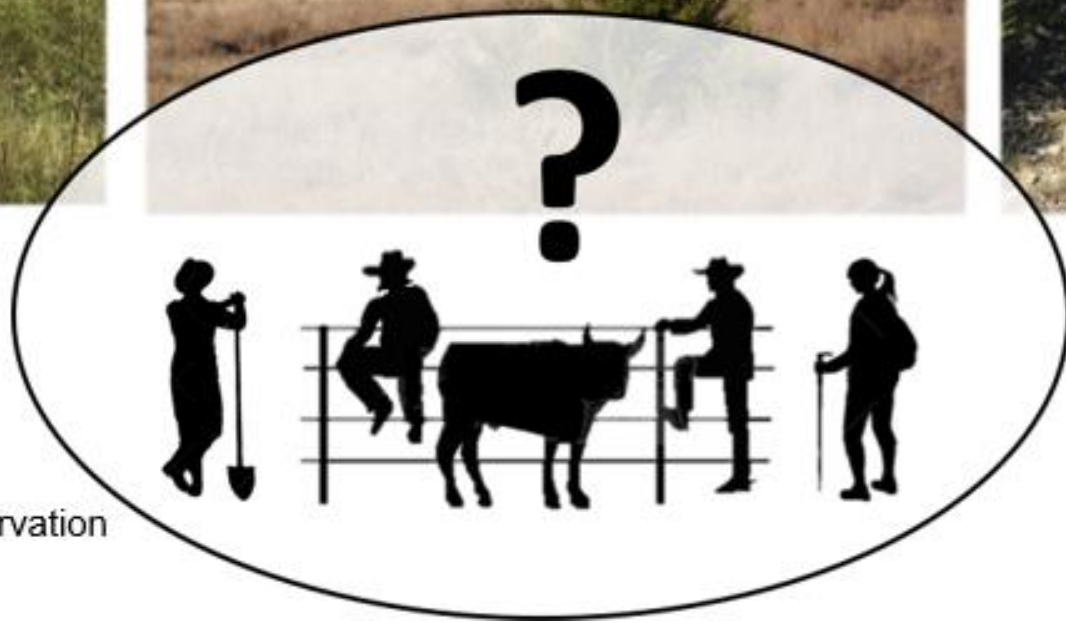
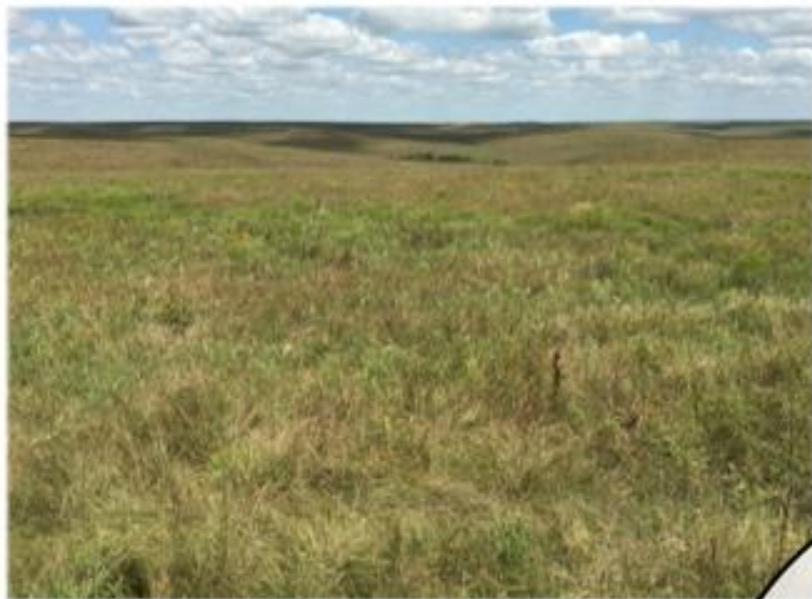
- ▶ PPJV Communications Specialist – (MT NRCS)
- ▶ South Dakota Science Integration Specialist – (SD CCCA)
- ▶ Montana Natural Resource Specialist – (MT NRCS)
- ▶ South Dakota Restorable Wetlands Database – (SD CIG)



Photo credit: Dan Casey



Human Dimensions of Woody Plant Encroachment



Kiandra Rajala | krajala@vt.edu
Research Associate
Forest Resources & Environmental Conservation
Virginia Tech

Presentation to NRCS
August 13, 2021

Measurement: Perceived threat

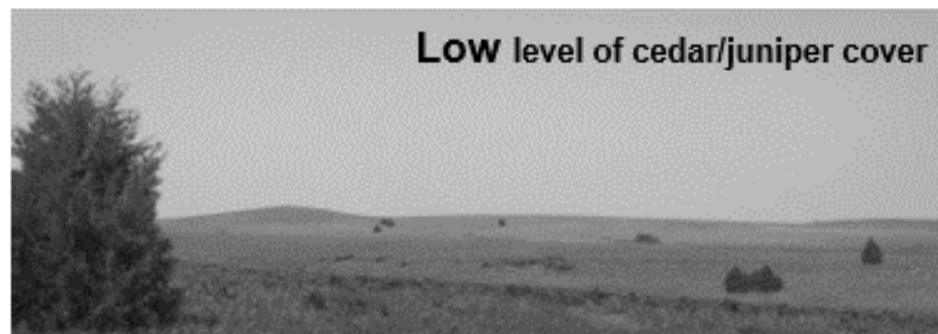


For each photo...

	<i>Extremely</i>	<i>Moderately</i>	<i>Slightly</i>	<i>Neither</i>	<i>Slightly</i>	<i>Moderately</i>	<i>Extremely</i>	
Acceptable	<input type="checkbox"/>	<input type="checkbox"/>	<input type="checkbox"/>	<input type="checkbox"/>	<input type="checkbox"/>	<input type="checkbox"/>	<input type="checkbox"/>	Unacceptable
Threatening	<input type="checkbox"/>	<input type="checkbox"/>	<input type="checkbox"/>	<input type="checkbox"/>	<input type="checkbox"/>	<input type="checkbox"/>	<input type="checkbox"/>	Encouraging
Undesirable	<input type="checkbox"/>	<input type="checkbox"/>	<input type="checkbox"/>	<input type="checkbox"/>	<input type="checkbox"/>	<input type="checkbox"/>	<input type="checkbox"/>	Desirable

Responses averaged into a 3-item perceived threat index using exploratory factor analysis

Results: Perceived threat (KS)



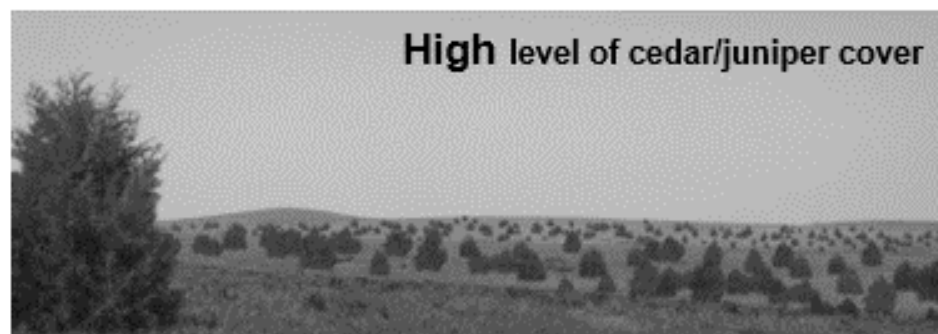
Slightly threatening

Mean	SD	Median
4.7	1.9	5



Moderately threatening

Mean	SD	Median
5.8	1.5	6



Extremely threatening

Mean	SD	Median
6.5	1.2	7

1= Extremely encouraging to 7 = Extremely threatening

Top-down

Map Satellite Search for a location

AREA BIRDS COVER

Starting value for selected area:
Acres: 95,115,600
Shrub Cover: 5.8%

Proposed shrub cover change:
-20 %
OR
0 Acres

RUN

RESULTS

Projected bird density Population changes More results Export

Species	Proposed shrub cover change	Population before	Population after	Percent change
GRSP	-20%	6.07	18.21	66.67
WEME	-20%	32.37	72.84	55.56
NOBO	-20%	6.07	14.16	57.14

Print

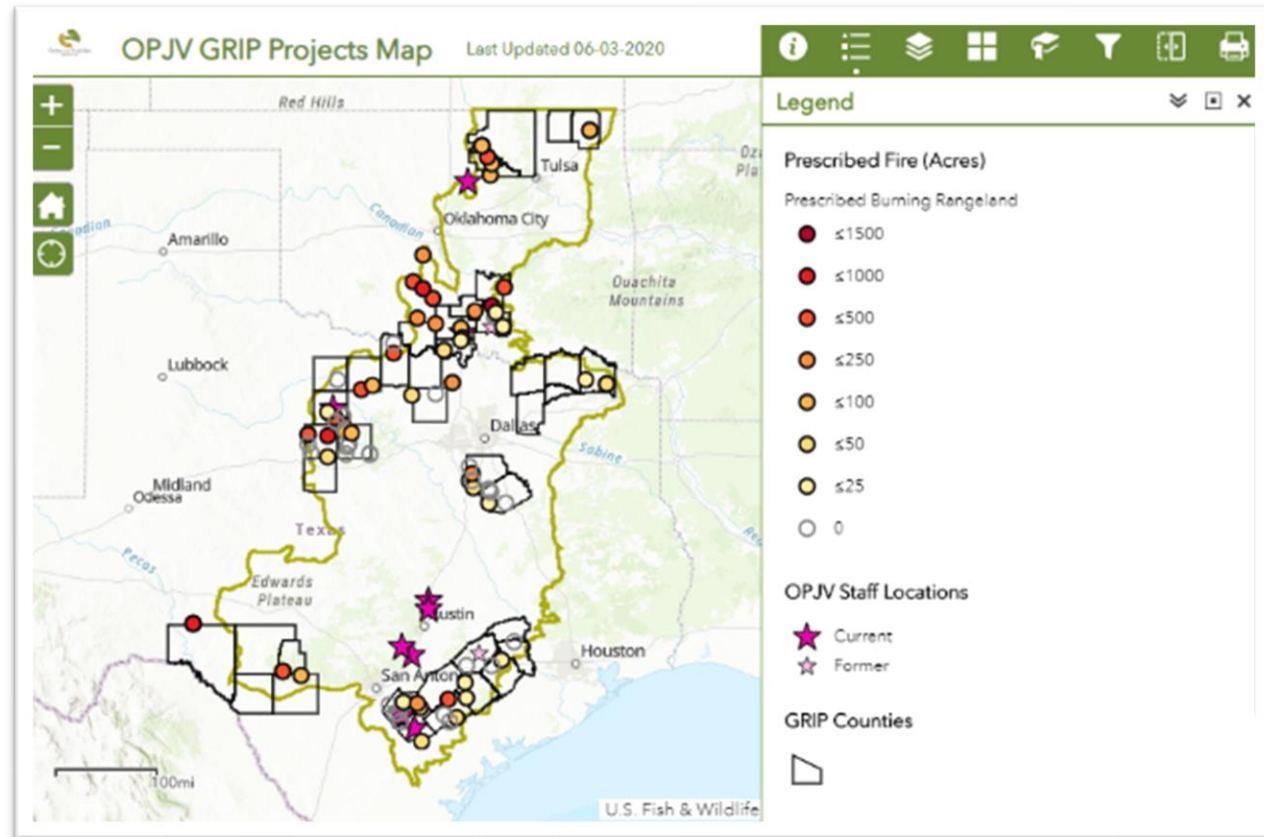
Estimated population changes for the selected species.

OPJV Grassland Restoration Incentive Program- GRIP

- Restore Grassland Function for Wildlife and Working Lands in Texas and Oklahoma
 - 300,000 acres per year for 10 years = 3 million acre BHAG
- Uses partner strengths (CD staff, contracting, payments, etc.)
- Uses several funding streams...RCPP is one of them!
 - Works in parallel with USDA Farm Bill programs
 - RCPP is also a bridge and potential catalyst for broader participation in delivering wildlife Technical Assistance with NRCS (i.e. EQIP).
- Relies on Focal Areas to target conservation efforts.
- Incorporates population monitoring.



GRIP working with NRCS programs



- No AGI cap or Non-Federal Contract options available
- Allows state and NGO staff to provide Technical Guidance
- Annual meetings to promote interagency cooperation (more boots on the ground)
- Provided over \$1 million in incentives resulting in over 106,000 acres of practices since 2013

RWBJV NRCS COLLABORATION FOUNDATION

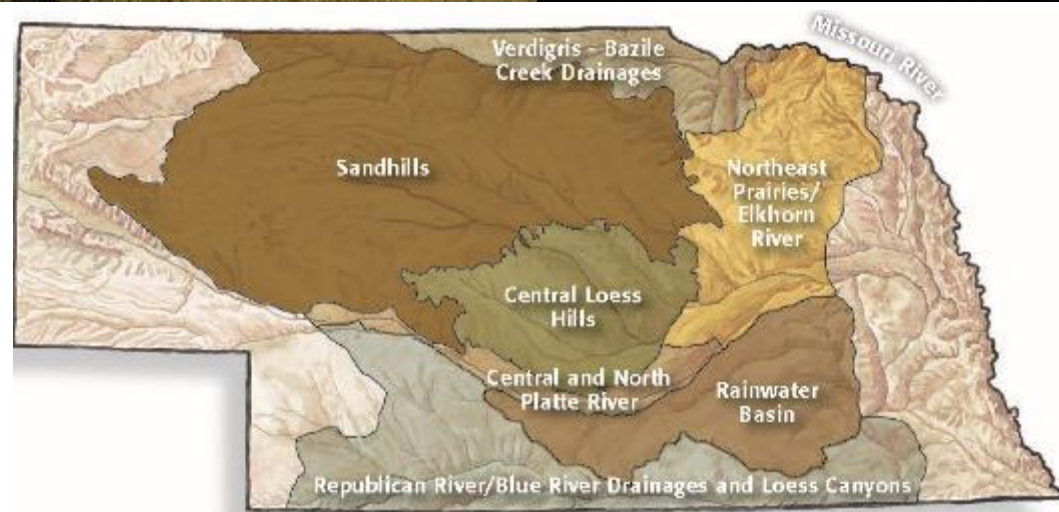
Implementation Plan Based

Economically Viable – 97%
Privately Owned Landscape

Promote Ecosystem Services as
well as Habitat

Geospatial Planning and
Programmatic Based Science
Support

Leveraged Resources (FA & TA)



RWBJV/NRCS/SANDHILLS PARTNERSHIP

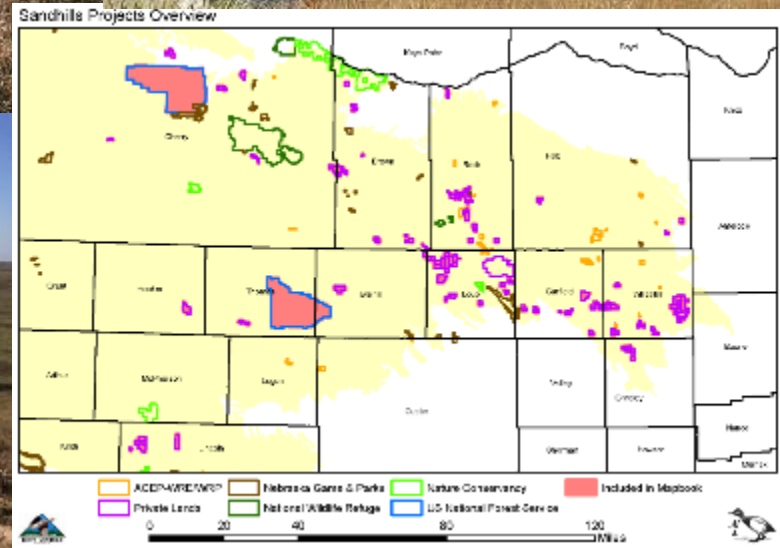
- **Joint Landowner and Agency Meetings** – Develop common foundation and identify conservation bottlenecks and leverage FA
- **Marketing and Outreach** – USDA owner and operator database to highlight opportunities to priority landowners
- **USFS Staff and TNC Prescribed Fire Specialist** - Developing burn plans, conduct prescribed fire and landowner workshops
- **RWBJV Partner Accomplishments (5 years)** – 163,000 unique acres impacted (20K ac. – Rx fire, 54K ac. tree removal, 89K ac. grazing infrastructure)
- **Monitoring** – Project tracking database, landcover, development, Grassland Bird SDMs, and prairie grouse monitoring to track response to management

SANDHILLS WORKING LANDS INITIATIVE



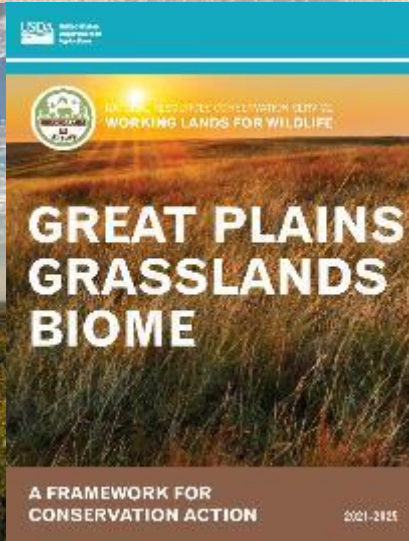
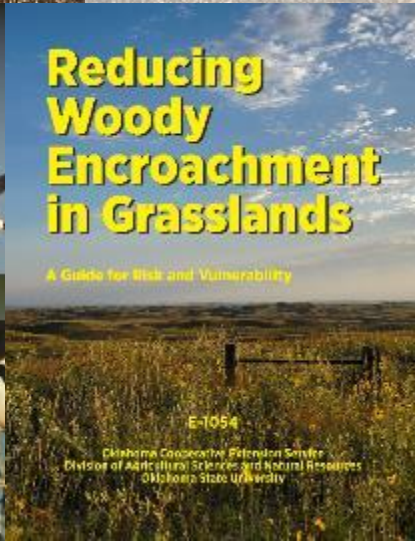
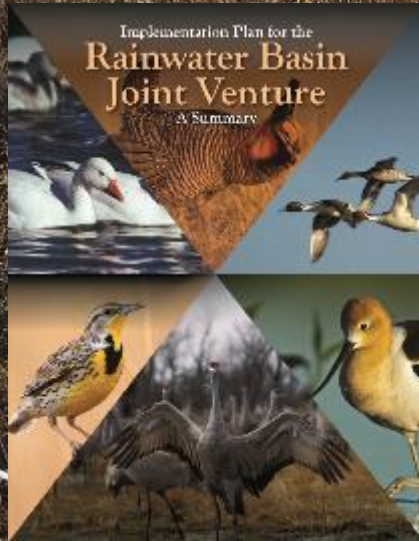
Since 2016 RWBVJ partners leveraged \$3.1 million

- \$385,000 landowner contribution
- 4 NFWF grants, NRCS WLFW, 4 NET grants, NGPC PR funding, DU NAWCA to augment USDA programs
- Hired a 2 prescribed fire specialist and extended USFS seasonal staff for prescribed on public & private lands
- Science and monitoring to support NRCS Initiative and other landowner groups



CONTRIBUTION TO NEBRASKA NRCS GPGI

- Conservation Outcomes – Bird abundance and prairie grouse monitoring to track response to management.
- Monitoring – Project tracking database, landcover development, BBS modeling, prairie grouse monitoring, and outcome based reporting.
- Coproduced Decision Support – Avian SDMs generated for NRCS to support planning and delivery.



Questions

- Provide Science and Communications capacity
- Build Field Capacity – put boots on the ground
- Facilitate Public Private partnerships
- Leverage match funding



Learn More:

Graeme Patterson
Director

JV8 Central Grasslands
Conservation Initiative

graeme.patterson@jv8.org

www.jv8.org

