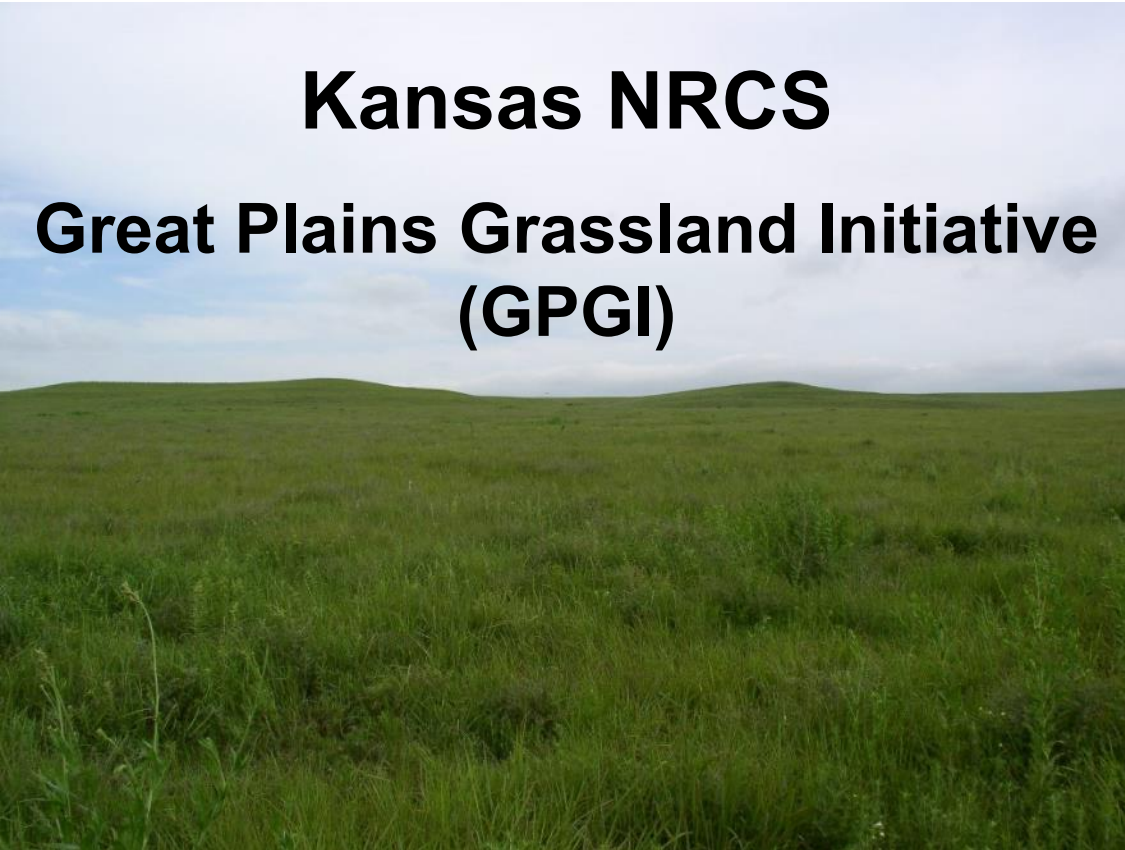




United States Department of Agriculture

Kansas NRCS

Great Plains Grassland Initiative (GPGI)



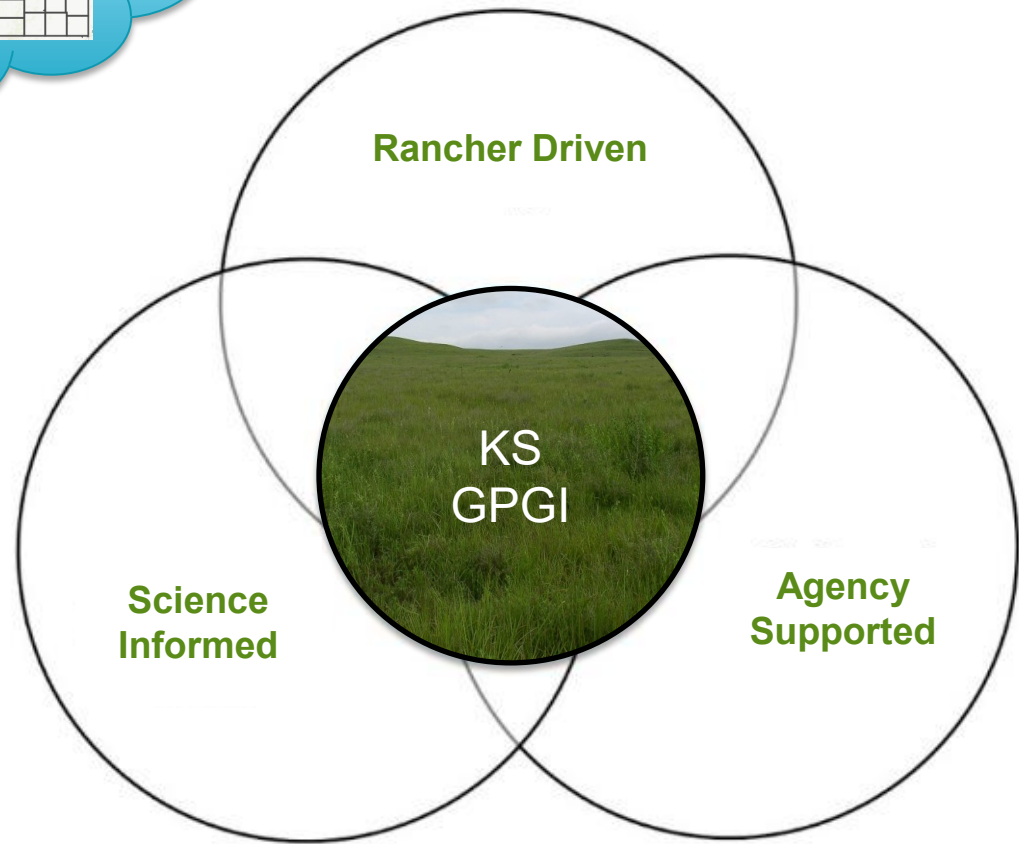
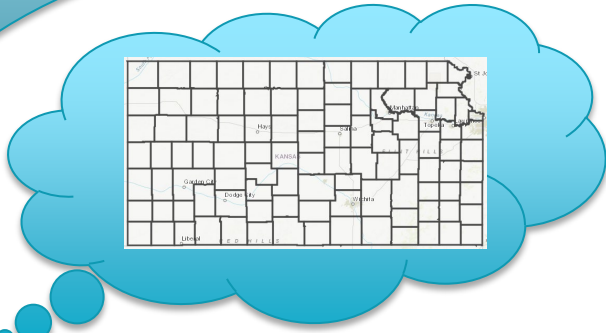
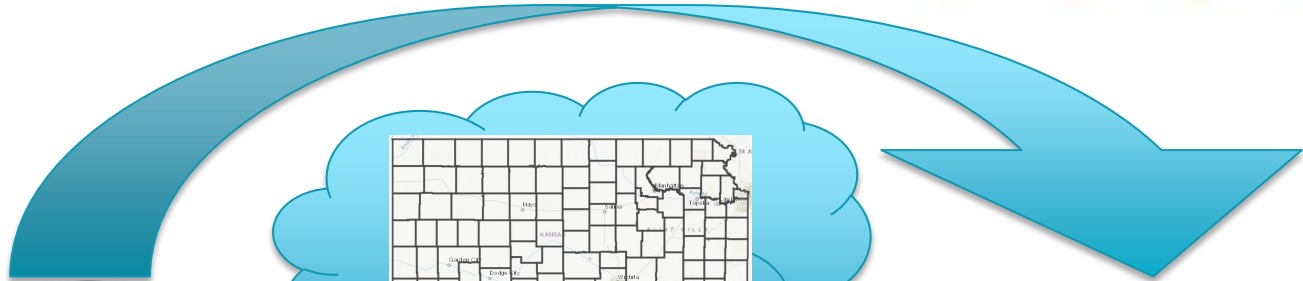
WLFW Framework in Action

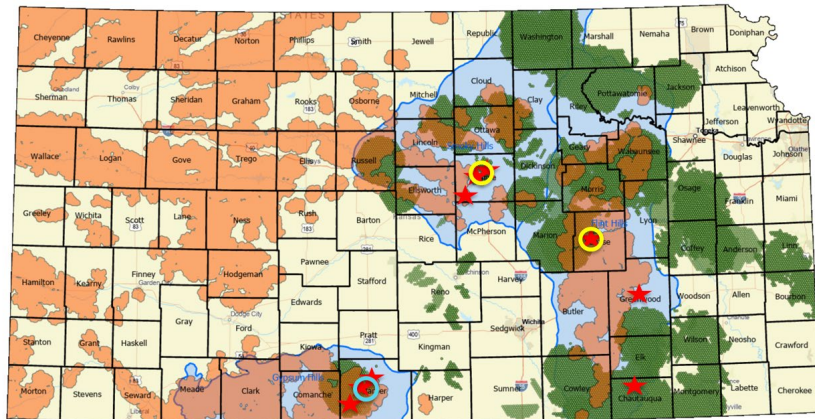
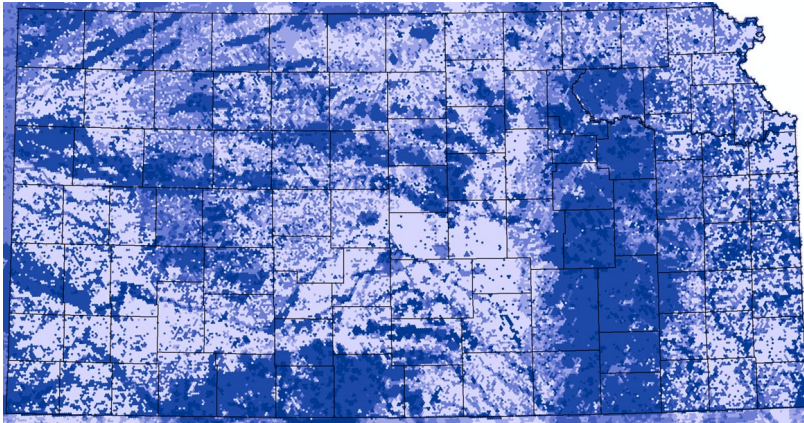
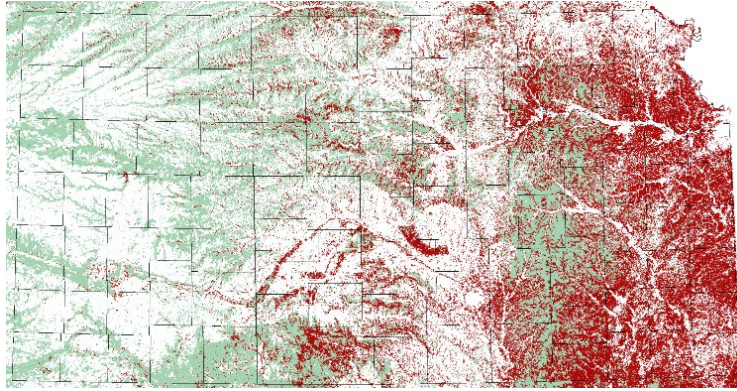
Dean Krehbiel, State Resource Conservationist
Doug Spencer, State Grazing Specialist

Natural
Resources
Conservation
Service

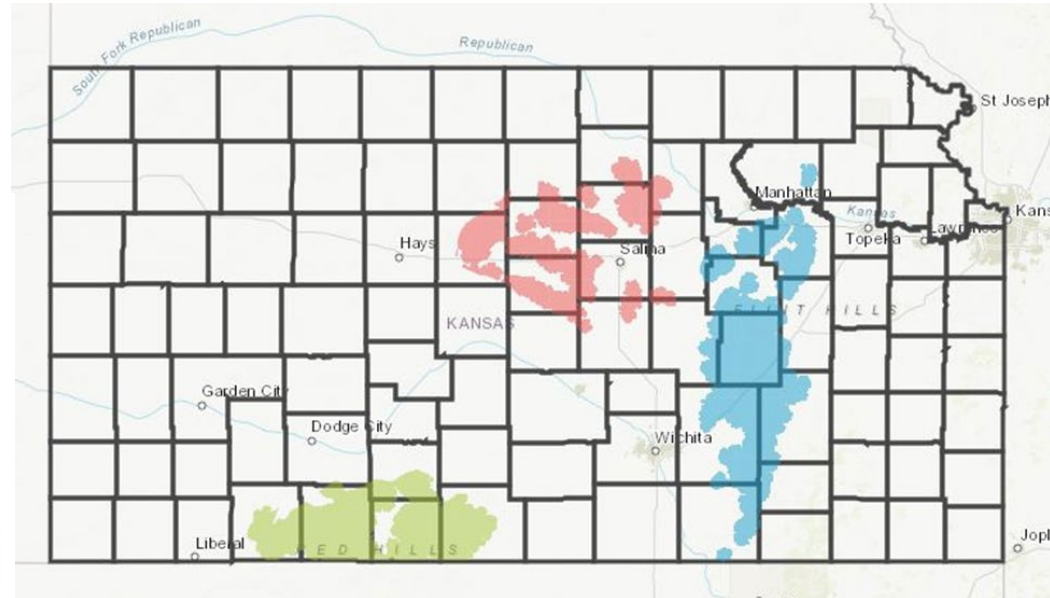
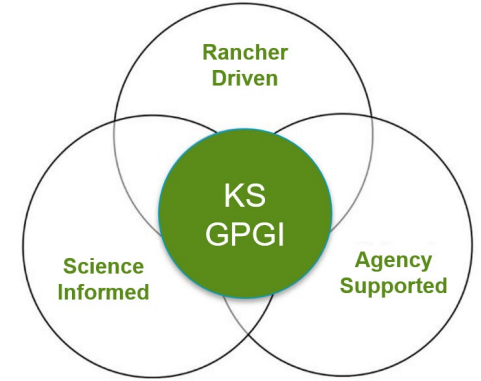
nrcs.usda.gov/

Framework in Action - KS GPGL





Opportunities



Declaring the Vision for GPGL

Large, Intact Grassland Cores..... not isolated remnants.



RANCHER DRIVEN

SCIENCE INFORMED

AGENCY SUPPORTED

Natural
Resources
Conservation
Service



Rancher Driven



RANCHER DRIVEN

SCIENCE INFORMED

AGENCY SUPPORTED

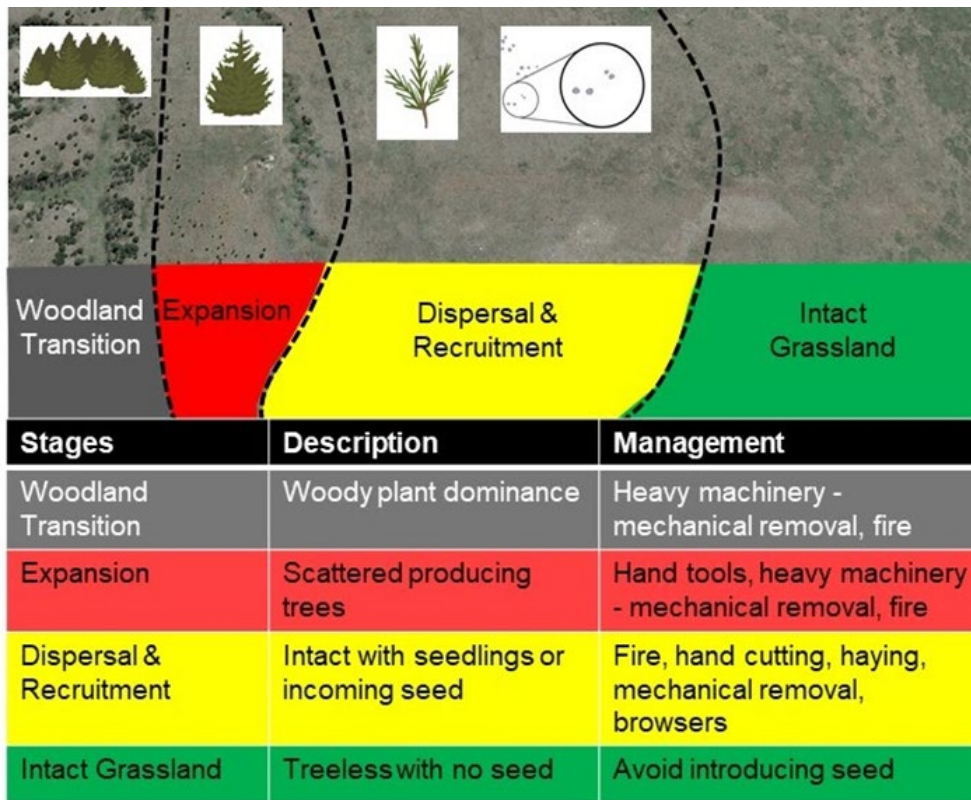
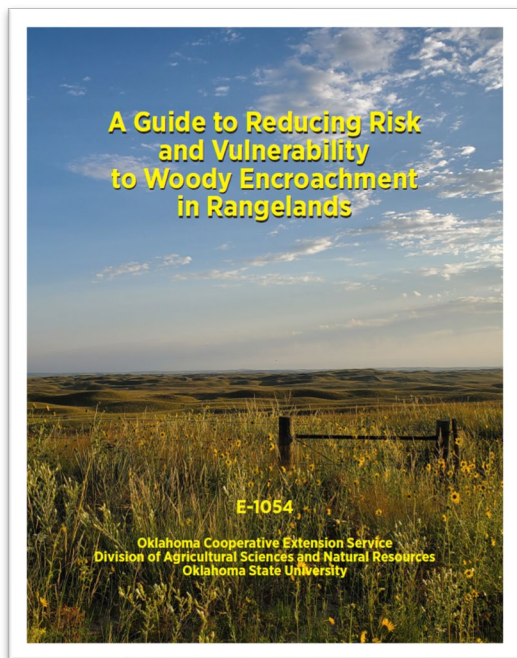
Natural
Resources
Conservation
Service

nrcs.usda.gov/



Science Informed

A GUIDE TO REDUCING RISK AND VULNERABILITY TO WOODY ENCROACHMENT IN RANGELANDS



RANCHER DRIVEN

SCIENCE INFORMED

AGENCY SUPPORTED

Natural Resources Conservation Service

nrcs.usda.gov/

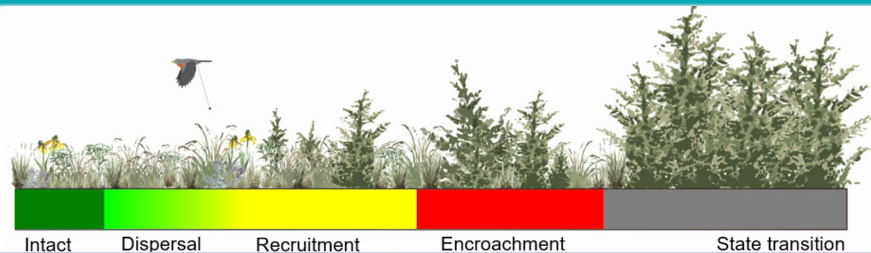


Identifying and Reducing Risk

Rangeland



Using Monitoring and Strategic Suppression



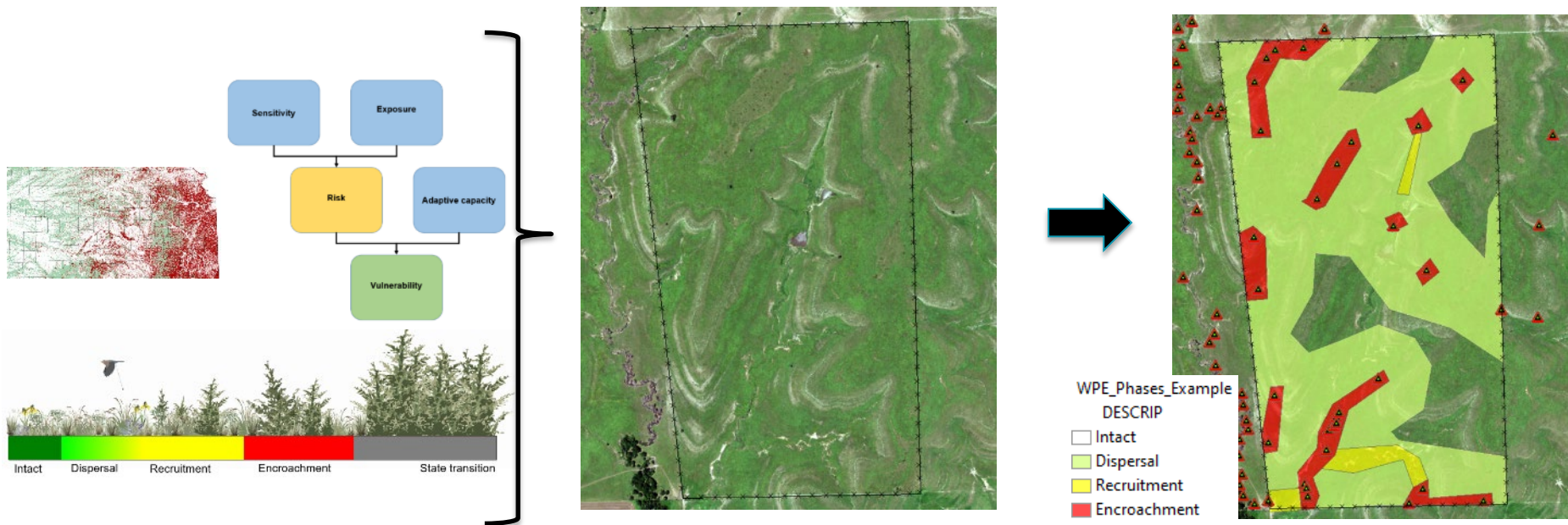
Vulnerable Rangeland



One Seed-Producing Tree puts at least 26 acres at risk due to dispersal!

Agency Supported

- Translate the science at a local and site level
- Assist in identifying woody plant encroachment (WPE) phases (location and extent)
- Plan and financially support conservation practices to reduce vulnerability to WPE



RANCHER DRIVEN

SCIENCE INFORMED

AGENCY SUPPORTED

Natural
Resources
Conservation
Service

nrcs.usda.gov/

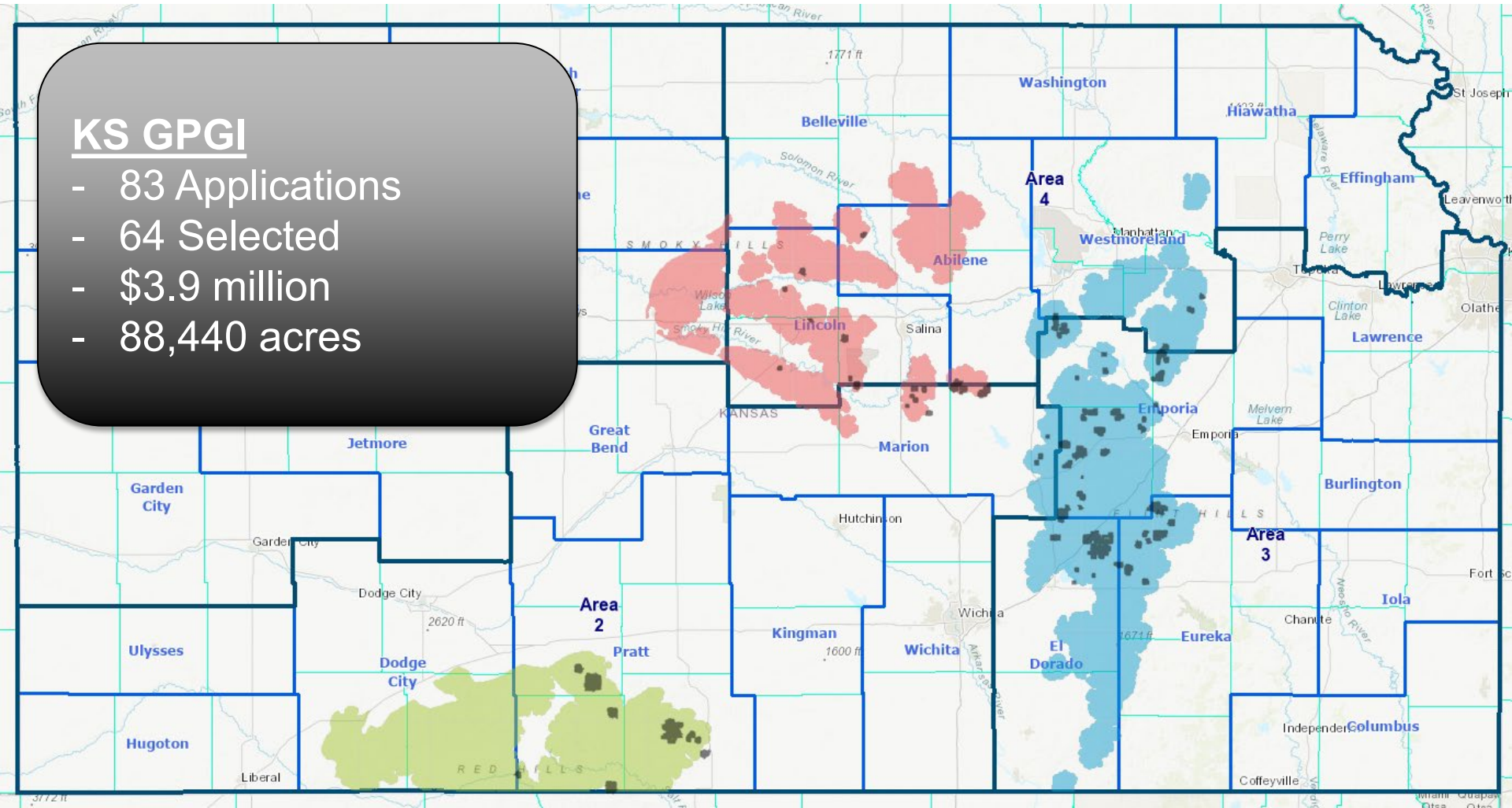


First Step in the Road to Success

*“Teamwork is the ability to work together toward a **common vision**. The ability to direct individual accomplishments toward **organizational objectives**. It is the fuel that allows common people to attain **uncommon results**.” – Andrew Carnegie*

KS GPGI

- 83 Applications
- 64 Selected
- \$3.9 million
- 88,440 acres

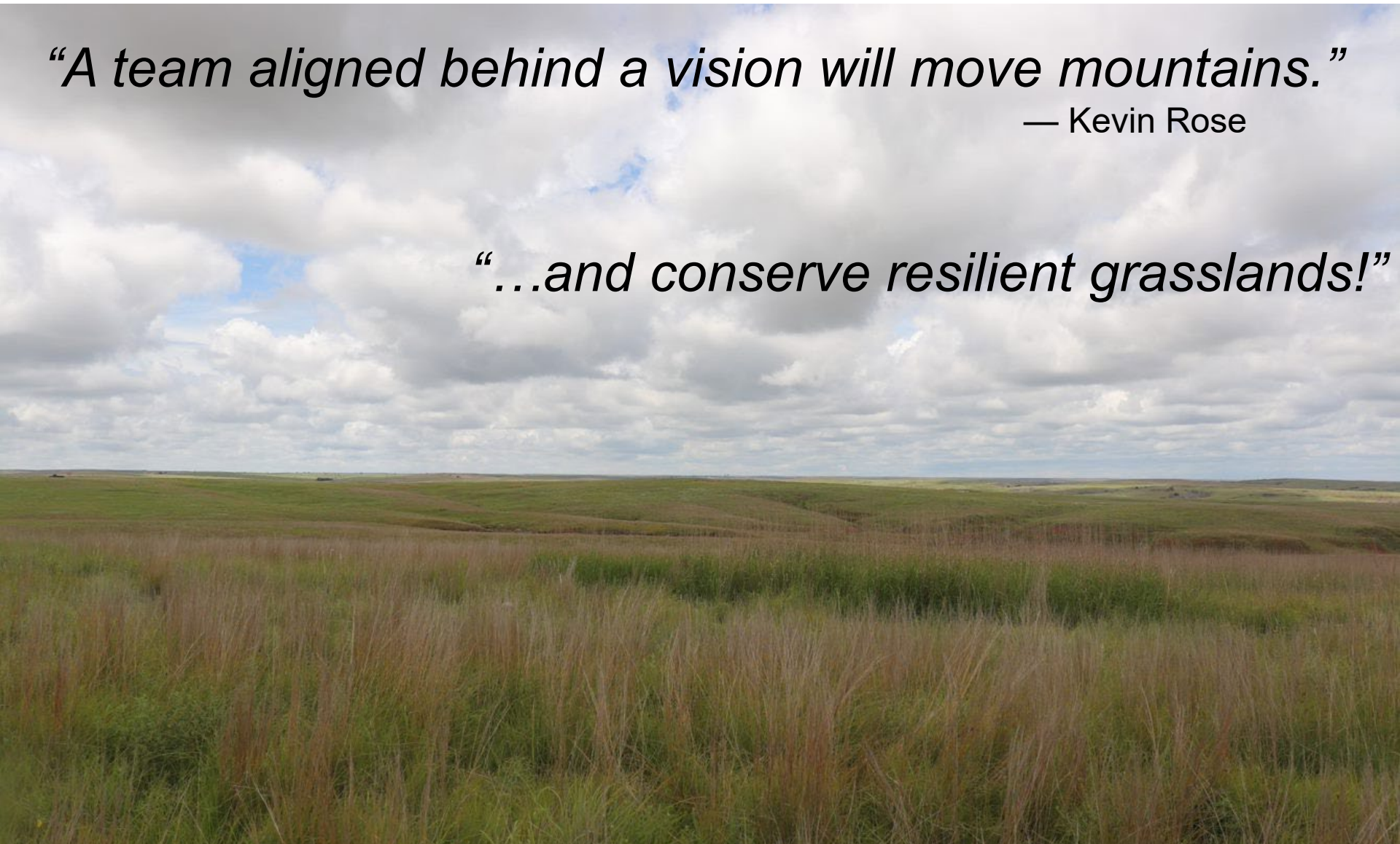




“A team aligned behind a vision will move mountains.”

— Kevin Rose

“...and conserve resilient grasslands!”



Discussion



In accordance with Federal civil rights law and U.S. Department of Agriculture (USDA) civil rights regulations and policies, the USDA, its Agencies, offices, and employees, and institutions participating in or administering USDA programs are prohibited from discriminating based on race, color, national origin, religion, sex, gender identity (including gender expression), sexual orientation, disability, age, marital status, family/parental status, income derived from a public assistance program, political beliefs, or reprisal or retaliation for prior civil rights activity, in any program or activity conducted or funded by USDA (not all bases apply to all programs). Remedies and complaint filing deadlines vary by program or incident.

Persons with disabilities who require alternative means of communication for program information (e.g., Braille, large print, audiotope, American Sign Language, etc.) should contact the responsible Agency or USDA's TARGET Center at (202) 720-2600 (voice and TTY) or contact USDA through the Federal Relay Service at (800) 877-8339. Additionally, program information may be made available in languages other than English.

To file a program discrimination complaint, complete the USDA Program Discrimination Complaint Form, AD-3027, found online at How to File a Program Discrimination Complaint and at any USDA office or write a letter addressed to USDA and provide in the letter all of the information requested in the form. To request a copy of the complaint form, call

(866) 632-9992. Submit your completed form or letter to USDA by:

- (1) mail: U.S. Department of Agriculture

Office of the Assistant Secretary for Civil Rights

1400 Independence Avenue, SW

Washington, D.C. 20250-9410;

- (2) fax: (202) 690-7442; or

- (3) email: program.intake@usda.gov.

USDA is an equal opportunity provider, employer, and lender.

