

Collaborative Conservation Strategy

CENTRAL GRASSLANDS ROADMAP

Tammy VerCauteren, Executive Director
Bird Conservancy of the Rockies

Matt Gray, Lead Facilitator
Rocky Mountain Innovation Lab

*The beauty of
collaboration is
you get pushed
to go where you
would never go
otherwise.*

~ Licia Perea



CENTRAL GRASSLANDS ROADMAP

PLANNING COMMITTEE

American Bird Conservancy | American Wind & Wildlife Institute | Audubon Rockies | Bird Conservancy of the Rockies

Blackfeet Nation | Canadian Wildlife Service | Colorado Parks and Wildlife | CONABIO | Conoco Phillips

Kansas State University | Northern Great Plains Joint Venture | National Fish and Wildlife Foundation

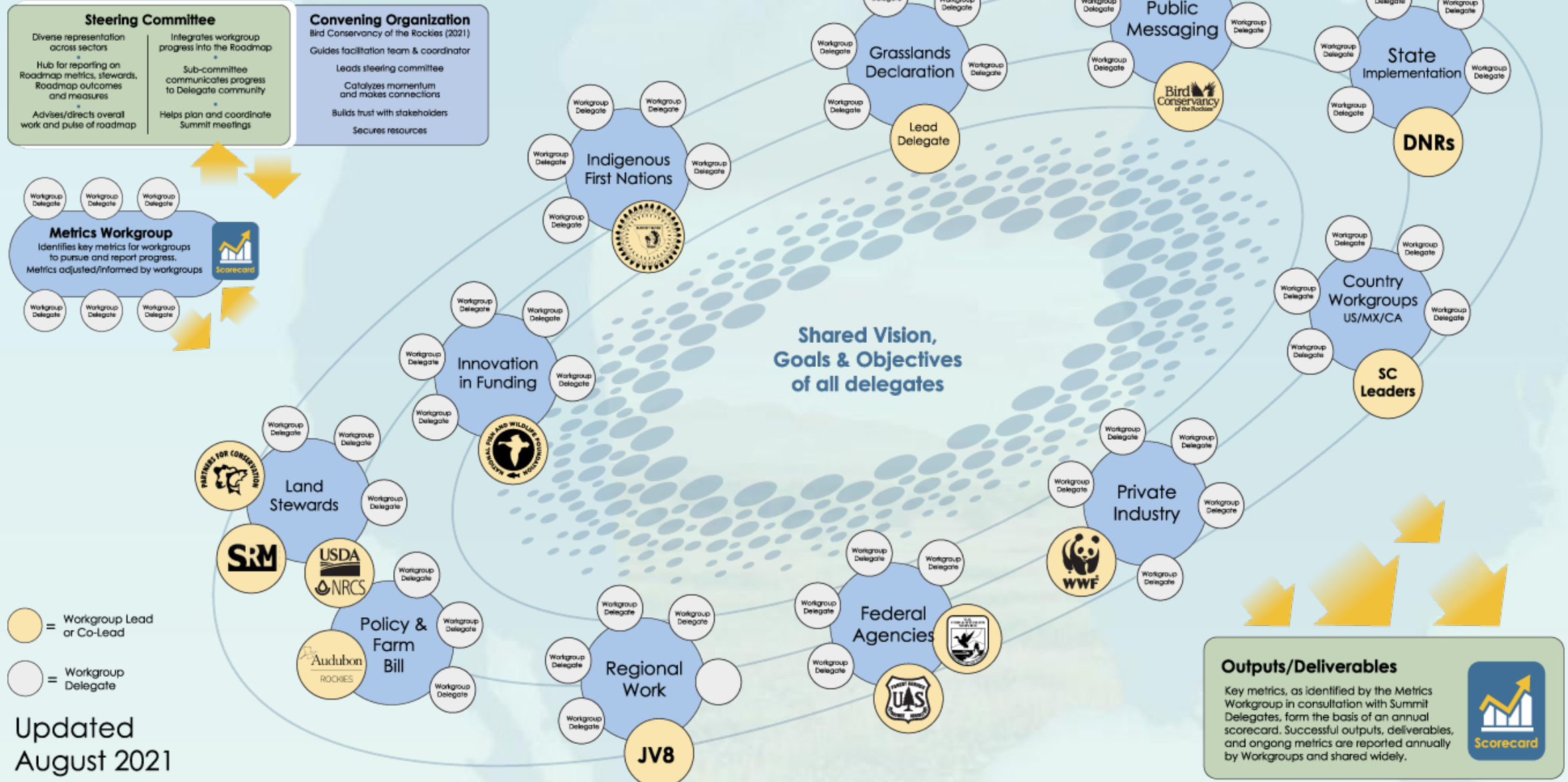
National Wildlife Federation | Natural Resources Conservation Service | Oaks & Prairies Joint Venture | Partners for Conservation |

Government of Saskatchewan Texas Parks and Wildlife | Tristate Energy | U.S. Fish & Wildlife Service | U.S. Forest Service

International Universidad Autonoma de Nuevo Leon | Winnett ACES | World Wildlife Fund



Constellation Governance Model



Steering Committee

- Diverse representation across sectors
- Hub for reporting on Roadmap metrics, stewards, Roadmap outcomes and measures
- Advises/directs overall work and pulse of roadmap
- Integrates workgroup progress into the Roadmap
- Sub-committee communicates progress to Delegate community
- Helps plan and coordinate Summit meetings

Convening Organization
Bird Conservancy of the Rockies (2021)

- Guides facilitation team & coordinator
- Leads steering committee
- Catalyzes momentum and makes connections
- Buils trust with stakeholders
- Secures resources

Metrics Workgroup

Identifies key metrics for workgroups to pursue and report progress. Metrics adjusted/informed by workgroups

Scorecard

- Yellow circle = Workgroup Lead or Co-Lead
- White circle = Workgroup Delegate

Outputs/Deliverables

Key metrics, as identified by the Metrics Workgroup in consultation with Summit Delegates, form the basis of an annual scorecard. Successful outputs, deliverables, and ongoing metrics are reported annually by Workgroups and shared widely.

Scorecard

Updated August 2021

Presenting Sponsors

KNOBLOCH
FAMILY FOUNDATION

ConocoPhillips

Platinum Sponsors \$10,000+



Gold Sponsors \$5,000+



Silver Sponsor
\$2,500+



Scholarship Sponsor
\$500-\$1,500



CENTRAL GRASSLANDS ROADMAP

Virtual Summit (August 2020)

250 participants, 150 orgs/individuals

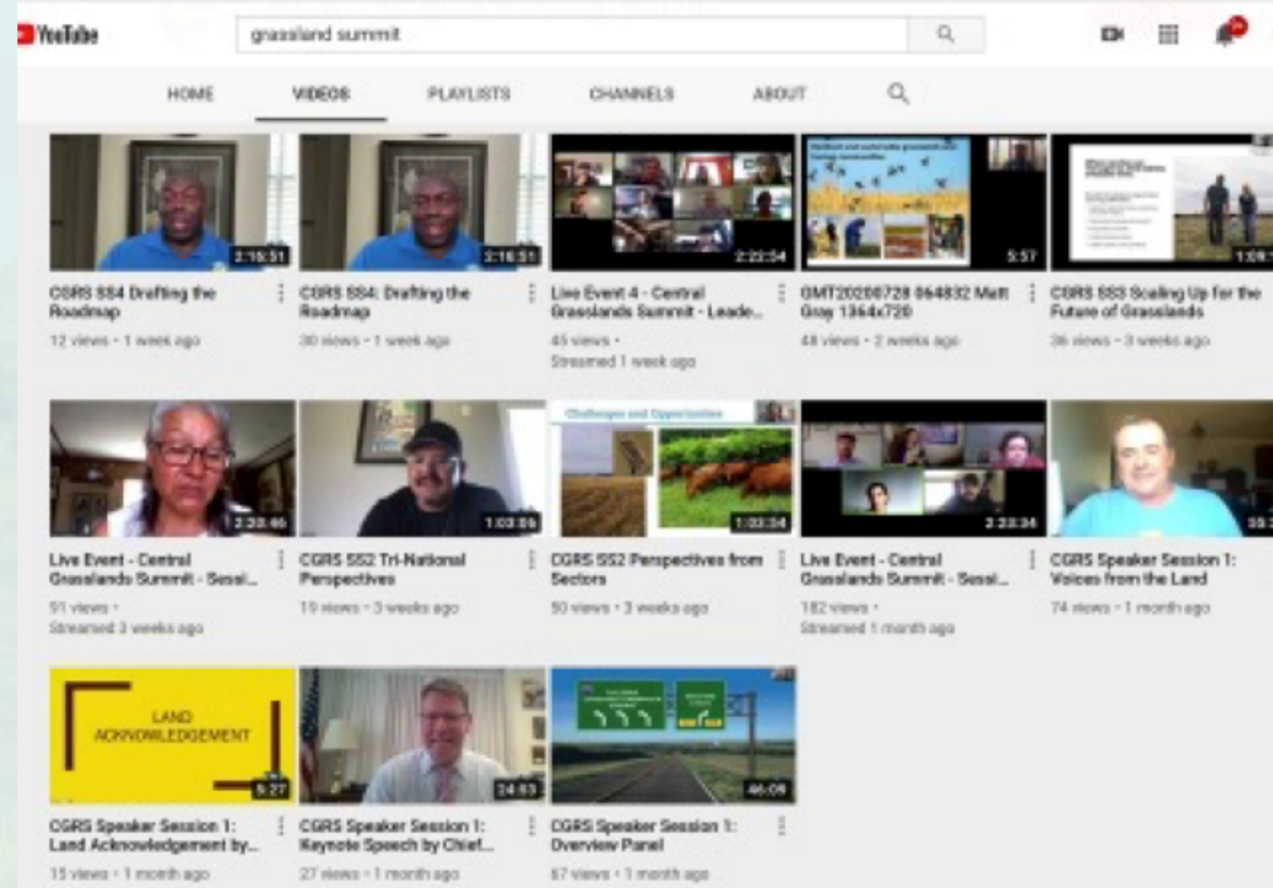
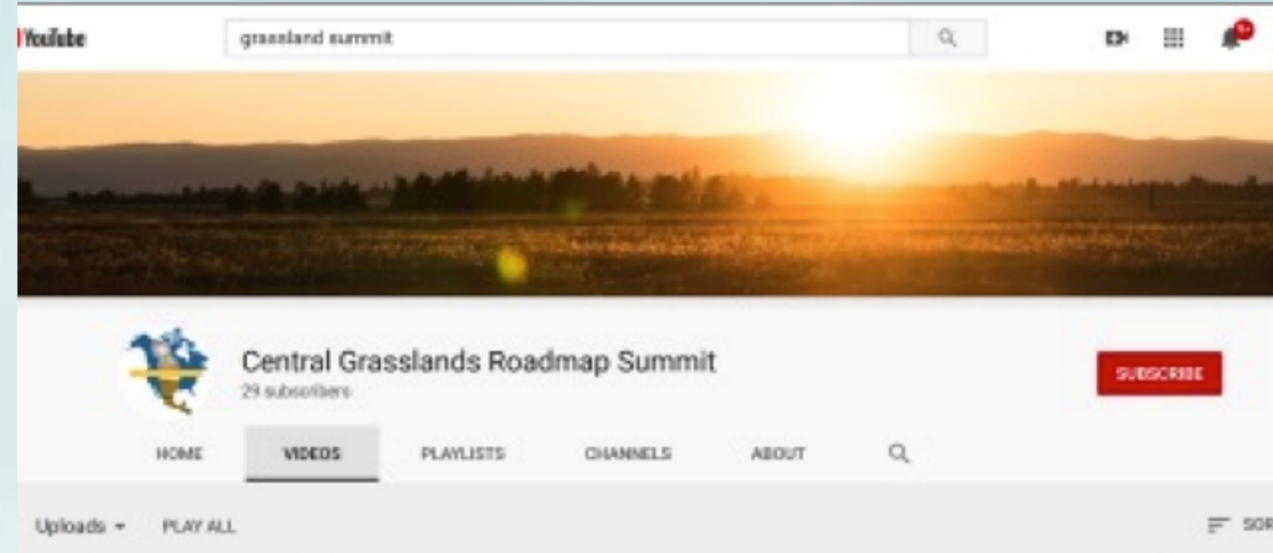
8 sectors and 3 countries represented

Panel discussions addressing:

- Science, Indigenous voices, cultural perspectives and applicable initiatives /legislation/efforts

Working sessions focusing on key themes:

- Partnerships and Engagement
- Research and Evaluation
- Policy and Funding



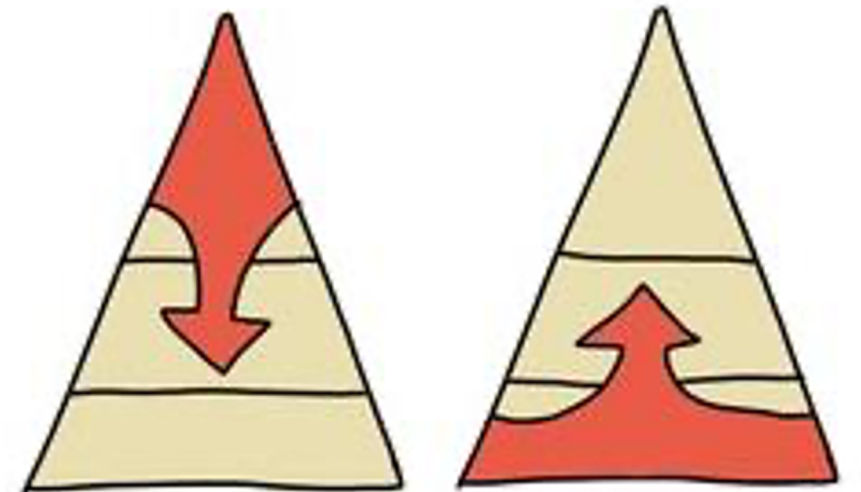
Roadmap Priorities: Big Buckets

- Increase Support of Collaborative Initiatives and funding for what works
- Build legislative or Farm Bill-AG policy Tools that Create Incentive-based Programs and innovate existing tools
- Communication strategies to garner support for Grasslands & Rural Communities
- Prioritize knowledge gaps and layer in biological and social science and data



30,000 foot level to grassroots

- Work groups and different voices representing 8 sectors and 3 countries
- Working on a collaborative process to apply at regional, state and community levels
- Landowner survey & engagement
- Innovative ideas



top-down bottom-up

What is being worked on by planning team

- Tri-lateral Letter of Intent committing to Grassland Conservation
- U.S. Dept of Agriculture, Interior and Defense Department commitment to grasslands
- America the Beautiful Policy brings voices together
- Metrics team validating geography and integrating GIS tools
- Broader Indigenous engagement strategies
- Canada and Mexico working groups



Where we are headed

- October meeting of cross-sector scientists to identify what measures we can achieve for grassland birds
- Grassland Forum to discuss grazing, birds, and land health
- Communications on why grasslands matter for urban/suburban audiences
- Planning for in-person summit June 2022 Fort Collins



Leveraging partnerships and dollars

- Joint Ventures as opportunity for investment and leveraging federal and non-federal dollars
- Foundations catalyzing across borders and boundaries
- NFWF model of federal, corporate, private dollars to get more done on the ground and track outcomes
- AFWA NCN from roadmaps to implementation
- Cross boundary funding and conservation opportunities
- Catalyzing investment: from millions to billions



Summit June 2022

- Virtual attendees want in person time together, relationship building
- At summit, break into sectors and identify areas to commit
- Work across sectors to validate and challenge to more collaborative thinking
- Make formal commitments to shared roadmap metrics
- Develop a team to steward effort



Measures of Commitment

Grassland Scorecard

X million acres restored, enhanced conserved

- Industry commitment
- Federal
- NGO
- Landowners
- States, other

Stable populations of grassland birds in greatest declines in 10 years

- Pollinators
- Pronghorn
- Numbers saved or added on the landscape



Grassland Scorecard

- Water on the landscape- measures that matter
- Carbon stored, carbon removed- corporations want to see 30% reduction in 10 years
- Stability of human communities
- Grassland sustainability measures
- Money invested in grasslands millions to billions
- Other?



STRUCTURE FOR COMMITMENTS AND REPORTING

Goals and Vision: The measurable goals identified above, as well as the overarching vision for the Roadmap are now defined and continue to be shared.



Commitments: Delegates, leaders, and organizations sign on to support the vision and goals of the Roadmap, and to offer relevant commitments specific to their work and mission.



Mechanisms: A variety of mechanisms are established to structure commitments and reporting.



Tri-Lateral LOI: for Canada, U.S. & Mexico



Federal inter-Agency MOU: U.S. model to be adapted by CA/MX



JV8 & States: Strategy alignment & delivery



Funds: Private, Foundations, Government, Corporate Investments



Direct Project Commitments & Investments from: NGOs, Public, Private, & Tribal Agencies

Ranchers, ejidos, landowner collaboratives: locally-driven solutions

Landowner Survey Results

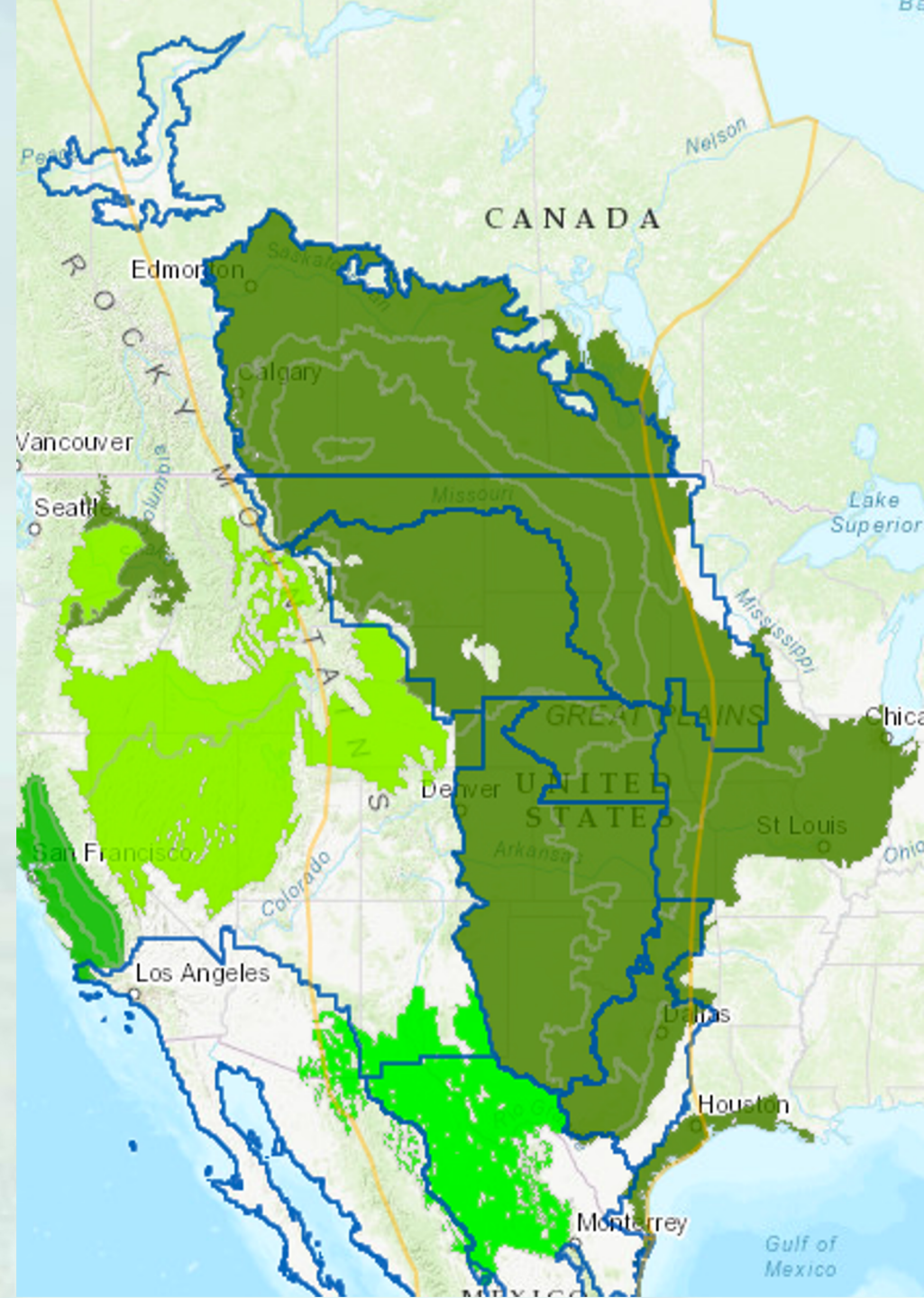
- **Survey Intent:** To ensure that the priorities identified in the Central Grasslands Roadmap support ranchers, landowners, and producers as much as possible from their point of view and needs.
- **Topics:** Experience engaging with existing programs, efficacy of those programs, brainstorming future programs, and understanding priority communication messages
- **Results:** 153 Respondents over 3 months
- **Major Themes:** economics and conservation are tightly interconnected, Importance of program flexibility, frustration with bureaucracy



CENTRAL GRASSLANDS ROADMAP

Today's Objectives

- Provide clarity and illuminate connectivity in relation to the NRCS Great Plains Framework and the Central Grasslands Roadmap
- Highlight CRP and opportunities for grassland conservation
- Engage folks at state and regional leadership levels
- Ensure opportunities to connect individually and across federal and partner agencies
- Demonstrate the interconnectivity of the JVs including the JV8 Strategic Habitat Conservation Plan



The Roadmap and You

- Ensure this is relevant to your work
- Do we need a 2nd partner meeting before the Summit?
- Sign up for newsletter and share across your network
- Are you interested in a focal area from biological objectives to Indigenous engagement?

Contact Us: info@grasslandsroadmap.org

Stay informed: www.grasslandroadmap.org



UPDATE

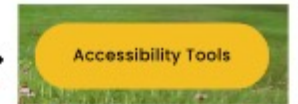
Central Grasslands Roadmap
A Conservation Plan for the Future

ROADMAP UPDATES

Para leer este correo electrónico en español, [haga clic aquí](#).
(To read this email in Spanish, [click here](#).)

New accessibility on the Website!
¡Nueva accesibilidad en el sitio web!

Just click
¡Simplemente haga clic!



HEARING THE VOICE OF WORKING LANDS



Understanding that more than 70% of the Central Grasslands is privately owned, working lands are foundational to the conservation plan, strategies, and priorities put forth in the Roadmap. With that in mind, we want to continue to hear from ranchers, landowners, and producers whenever we can. While we are regularly holding outreach presentations and discussions, we want to follow-up and reach an even wider audience. [Please spend just a few moments completing this survey if you are managing working lands in some way, or share the survey with the land stewards that you know.](#) **Participants who choose to do**

In Conclusion

What can you expect to see next in terms of communication from us?

- Summary of today
- Answers to any open questions
- Emails & Newsletters

What do you need from us?

- What do you need to stay involved?
- What coordination is needed?
- What are the best ways to communicate?

Contact Us: info@grasslandsroadmap.org

Stay informed: www.grasslandroadmap.org



Overview

The Vision: Where We Want to Be

When we look out at the landscape, we witness diverse grasslands with thriving Indigenous and rural communities, millions of acres of connected land under various types of conservation, profitable working land with livestock and regenerative agriculture, flourishing ecosystems of soil, plants, and wildlife, and rivers and wetlands supporting equifers, wildlife, production, and people.

The Challenge: Why This Matters

Disparate efforts are not adding up, and measures of wildlife populations, grassland areas, human community health and sustainability are down, and continue to decline. We have to think, act and do differently, and **that starts with us working together to get on the same map**, agreeing to the directions we need to go that focus on what we need to do more of, what we need to know more about, and what new strategies are critical to saving our grasslands over the next ten years.

The Roadmap: How We'll Get There

This is a **collaborative guide** to increase conservation of North America's Central Grasslands, which span 600 million acres across Indigenous Lands, Canada, the United States and Mexico. **By bringing together 8 diverse sectors**, (Indigenous communities and Nations, province and state-level agencies, industry, private



Conceptual scope of the Roadmap's Scale and Connectivity

New! Draft Long Form of the Roadmap