

Collaborative Conservation Strategy

CENTRAL GRASSLANDS ROADMAP

Tammy VerCauteren, Executive Director
Bird Conservancy of the Rockies

The beauty of collaboration is you get pushed to go where you would never go otherwise.

~ Licia Perea



CENTRAL GRASSLANDS ROADMAP

PLANNING COMMITTEE

American Bird Conservancy | American Wind & Wildlife Institute | Audubon Rockies | Bird Conservancy of the Rockies

Blackfeet Nation | Canadian Wildlife Service | Colorado Parks and Wildlife | CONABIO | Conoco Phillips

Kansas State University | Northern Great Plains Joint Venture | National Fish and Wildlife Foundation

National Wildlife Federation | Natural Resources Conservation Service | Oaks & Prairies Joint Venture | Partners for Conservation |

Government of Saskatchewan Texas Parks and Wildlife | Tristate Energy | U.S. Fish & Wildlife Service | U.S. Forest Service

International Universidad Autonoma de Nuevo Leon | Winnett ACES | World Wildlife Fund



Roadmap Priorities: Big Buckets

- Increase Support of Collaborative Initiatives and funding for what works
- Build legislative or Farm Bill-AG policy Tools that Create Incentive-based Programs and innovate existing tools
- Communication strategies to garner support for Grasslands & Rural Communities
- **Prioritize knowledge gaps and layer in biological and social science and data**



Biology

- cross-sector scientists what measures we can achieve for grassland birds
- At least 4 different lists of priority birds-
- Can we get to stable in 20 years
- Models and integration
- JVs and acres and population objectives
- Parking lot for what we don't know
- Addressing major threats (trees, annuals, conversion)
- Iterative and adapt as we learn more



Social Science

- > 80% of land is private
- Working landscape
- Economics matter
- Care about ecosystems, land health, animal health
- Landowners, part of the conversations, sharing local knowledge, part of the solution
- Species we select, knowledge/data we use has to be relevant at local community levels



Metrics and Integration





- Collaborative boundary developed by Metrics work group of roadmap
 - a. JV8 boundary
 - b. Commission for Environmental Cooperation
 - c. Bird Conservation Regions
- Team now looking at story map and ways to bring in layers from Indigenous lands, landowner cooperatives, to bird models, climate layers, prairie dogs, etc.
- Also looking at potential of nested framework

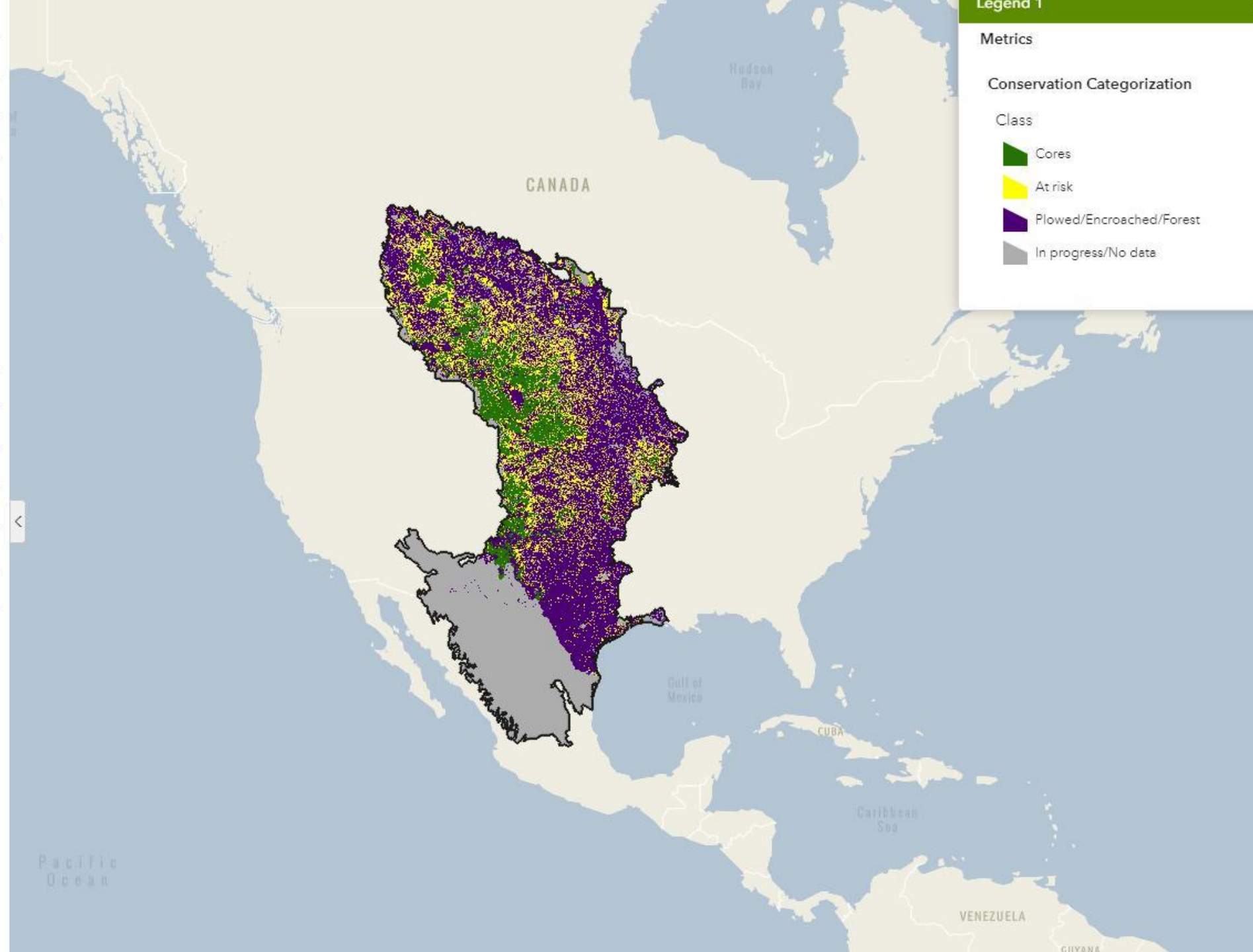


Metrics

Conservation Categorization

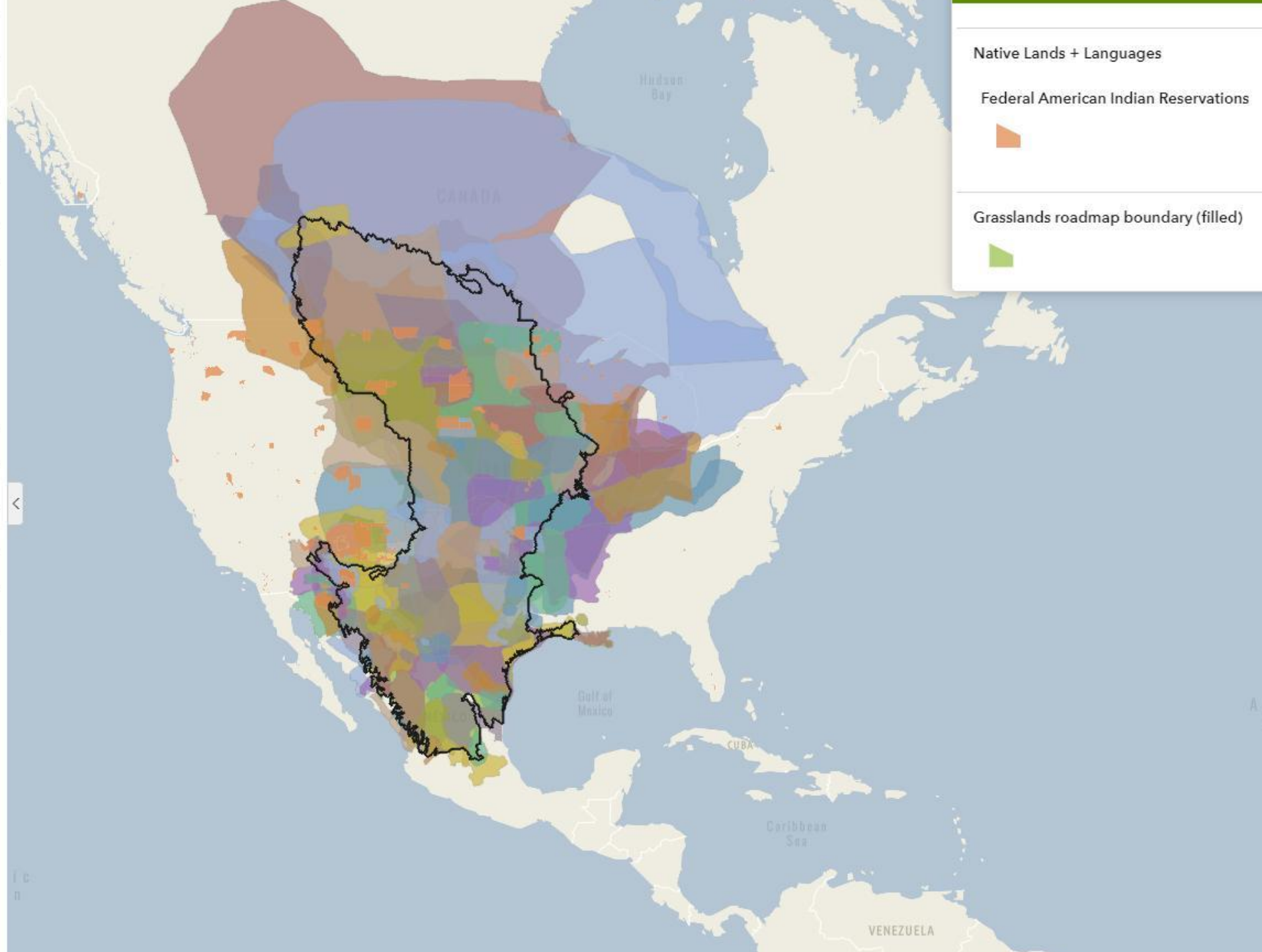
Class

-  Cores
-  At risk
-  Plowed/Encroached/Forest
-  In progress/No data



- Grasslands roadmap boundary (outline) ...
- Boundaries ...
- Biodiversity ...
- Climate ...
- Ecoregions ...
- Land Cover + Change ...
- Metrics ...
 - Conservation Categorization
 - TNC Resilient and Connected Networks (Simple)
- Native Lands + Languages ...
- Priority Areas ...
- Protected Areas ...
- Soils ...
- Water ...
- Grasslands roadmap boundary (filled) ...

- ▶ Grasslands roadmap boundary (outline) ...
- ▶ Biodiversity ...
- ▶ Climate ...
- ▶ Ecoregions ...
- ▶ Land Cover + Use ...
- ▶ Metrics ...
- ▼ Native Lands + Languages ...
 - Federal American Indian Reservations
 - Historical Native Territories
 - Native lands Languages
- ▶ Priority Areas ...
- ▶ Protected Areas ...
- ▶ Soils ...
- ▶ Water ...
- Grasslands roadmap boundary (filled) ...



Outputs feed into Summit May 2022

- Virtual attendees want in person time together, relationship building
- At summit, break into sectors and identify areas to commit
- Work across sectors to validate and challenge to more collaborative thinking
- Mid-level thinking in space and time- roll to local level and up to national and beyond
- Make formal commitments to shared roadmap metrics
- Develop a team to steward effort



Measures of Commitment

Grassland Scorecard

Stable populations of grassland birds in greatest declines in 20 years

- Pollinators
- Pronghorn
- Numbers saved or added on the landscape
- X million acres restored, enhanced conserved
- Industry commitment
- Federal
- NGO
- Landowners
- States, other



Grassland Scorecard

- Water on the landscape- measures that matter
- Carbon stored, carbon removed- corporations want to see 30% reduction in 10 years
- Stability of human communities
- Grassland sustainability measures
- Money invested in grasslands millions to billions
- Other?



Today's Goals

- Come together- species we can measure- bring 8-sectors to the table
- Getting to stable populations
- Modeling and alignment, cooperation, integration
- Parking lot of research needs from biological to social- future prioritization
- Aligning as we move to the May summit



The Roadmap and You

- Sign up for newsletter and share across your network
- Are you interested in a focal area from biological objectives to Indigenous engagement?
- Other?

Contact Us: info@grasslandsroadmap.org

Stay informed: www.grasslandroadmap.org



UPDATE

Central Grasslands Roadmap
A Conservation Plan for the Future

ROADMAP UPDATES

Para leer este correo electrónico en español, [haga clic aquí](#).
(To read this email in Spanish, [click here](#).)

New accessibility on the Website!
¡Nueva accesibilidad en el sitio web!

Just click
¡Simplemente haga clic!



HEARING THE VOICE OF WORKING LANDS



Understanding that more than 70% of the Central Grasslands is privately owned, working lands are foundational to the conservation plan, strategies, and priorities put forth in the Roadmap. With that in mind, we want to continue to hear from ranchers, landowners, and producers whenever we can. While we are regularly holding outreach presentations and discussions, we want to follow-up and reach an even wider audience. [Please spend just a few moments completing this survey if you are managing working lands in some way, or share the survey with the land stewards that you know.](#) Participants who choose to do